

WAAS CH 61013 W30A	APP CRS 304°	Rwy Idg TDZE Apt Elev	4999 9 9
--	------------------------	-----------------------------	-------------------------------------

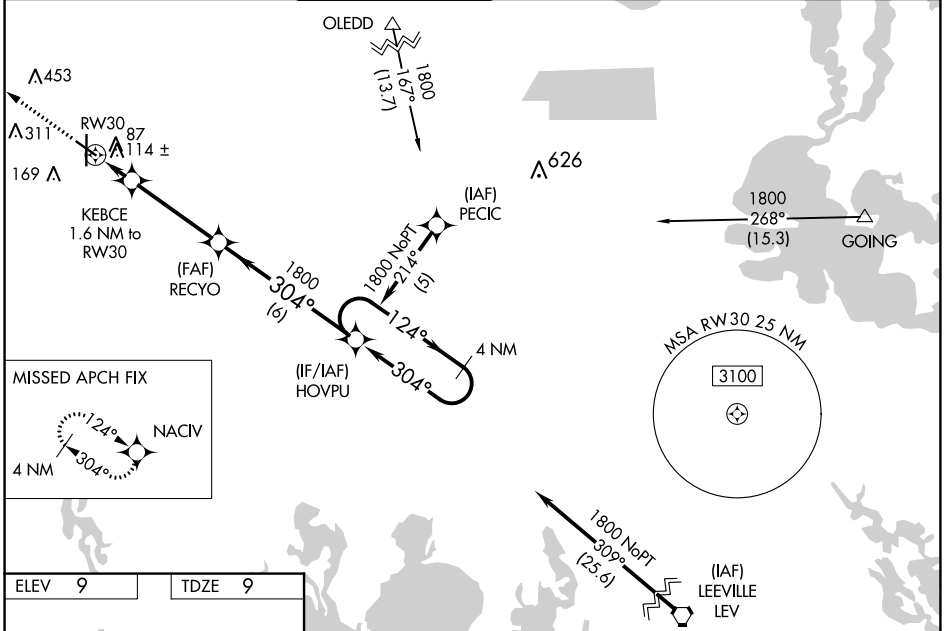
RNAV (GPS) RWY 30

HOUMA-TERREBONNE (HUM)

▼ For uncompensated Baro-VNAV systems, LNAV/VNAV NA below -15°C (5°F) or above 49°C (120°F). DME/DME RNP-0.3 NA. Visibility reduction by helicopters NA.
▲ When local altimeter setting not received, use Louis Armstrong New Orleans Intl altimeter setting: increase LPV DA to 336, LNAV/VNAV DA to 489, and all visibilities ¼ SM; increase all MDAs 80 feet and visibility Cats C and D ¾ SM. Baro-VNAV NA when using Louis Armstrong New Orleans Intl altimeter setting.

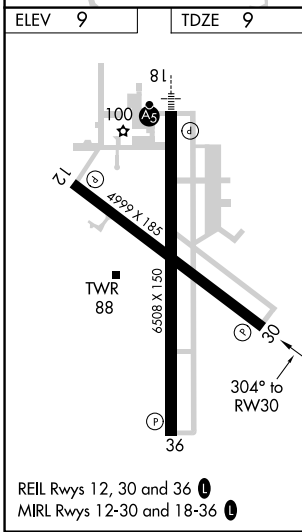
MISSED APPROACH: Climb to 1800 direct NACIV and hold.

ATIS 120.25	NEW ORLEANS APP CON 118.9 350.35	HOUMA TOWER ★ 125.3 (CTAF) 0 346.3	GND CON 123.875	CLNC DEL 118.9 (When twr closed)	UNICOM 122.95
-----------------------	--	--	---------------------------	---	-------------------------



SC-4, 03 OCT 2024 to 31 OCT 2024

SC-4, 03 OCT 2024 to 31 OCT 2024



ELEV 9	TDZE 9	1800 NACIV		VGSI and RNAV glidepath not coincident (VGSI Angle 3.00°/TCH 39°)	4 NM Holding Pattern
* LNAV only		KEBCE 1.6 NM to RW30	RECYO	HOVPU	
RW30		560*	304°	1800	124°
1.6 NM		3.8 NM	6 NM		GP 3.00° TCH 45
CATEGORY	A	B	C	D	
LPV DA		259-¾	250 (300-¾)		
LNAV/VNAV DA		412-1⅛	403 (500-1⅛)		
LNAV MDA		380-1	371 (400-1)		
C CIRCLING		480-1	471 (500-1)	760-2¼ 751 (800-2¼)	760-2½ 751 (800-2½)