

| | | |
|--|------------------------|---|
| VOR/DME TBD 117.15 Chan 118(Y) | APP CRS 302° | Rwy Idg 4999 TDZE 9 Apt Elev 9 |
|--|------------------------|---|

VOR/DME RWY 30

HOUMA-TERREBONNE (HUM)

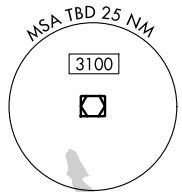
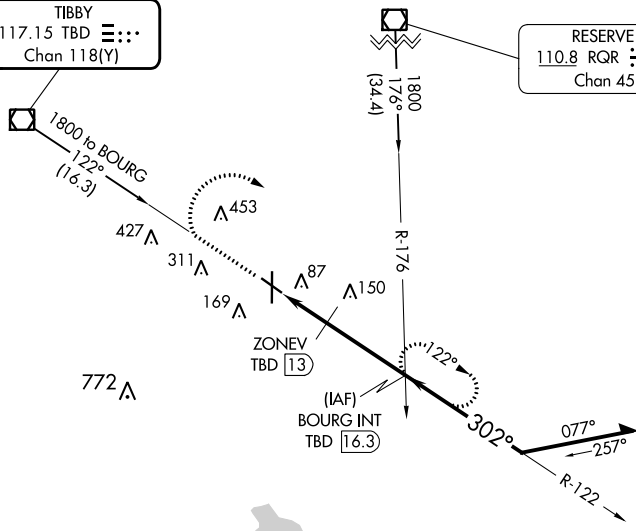
⚠ Rwy 30 helicopter visibility reduction below 3/4 SM NA. When local altimeter setting not received, use Louis Armstrong New Orleans Intl altimeter setting and increase all MDAs 80 feet, and visibility Cats C and D 1/4 SM.

MISSED APPROACH: Climb to 1100 then climbing right turn to 1800 via TBD VOR/DME R-122 to BOURG INT/TBD 16.3 DME and hold.

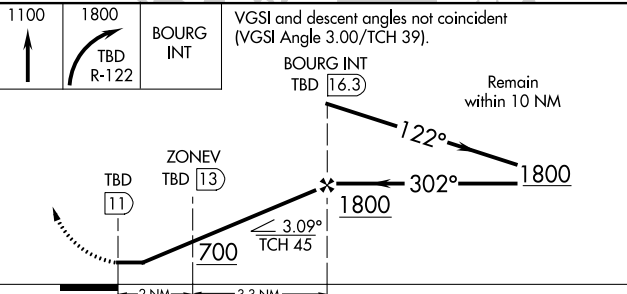
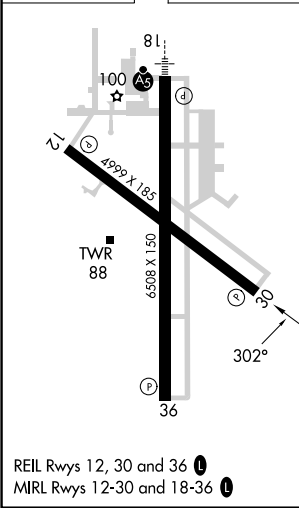
| | | | | | |
|-----------------------|--|--|---------------------------|---|-------------------------|
| ATIS 120.25 | NEW ORLEANS APP CON 118.9 350.35 | HOUMA TOWER ★ 125.3 (CTAF) 346.3 | GND CON 123.875 | CLNC DEL 118.9 (When twr closed) | UNICOM 122.95 |
|-----------------------|--|--|---------------------------|---|-------------------------|

TIBBY
117.15 TBD
Chan 118(Y)

RESERVE
110.8 RQR
Chan 45



| | |
|--------|--------|
| ELEV 9 | TDZE 9 |
|--------|--------|



| CATEGORY | A | B | C | D |
|-------------------|-------|-------------|------------------------------|------------------------------|
| S-30 | 400-1 | 391 (400-1) | 400-1 1/8 | 391 (400-1 1/8) |
| C CIRCLING | 480-1 | 471 (500-1) | 760-2 1/4 751 (800-2 1/4) | 760-2 1/2 751 (800-2 1/2) |

SC-4, 03 OCT 2024 to 31 OCT 2024

SC-4, 03 OCT 2024 to 31 OCT 2024