

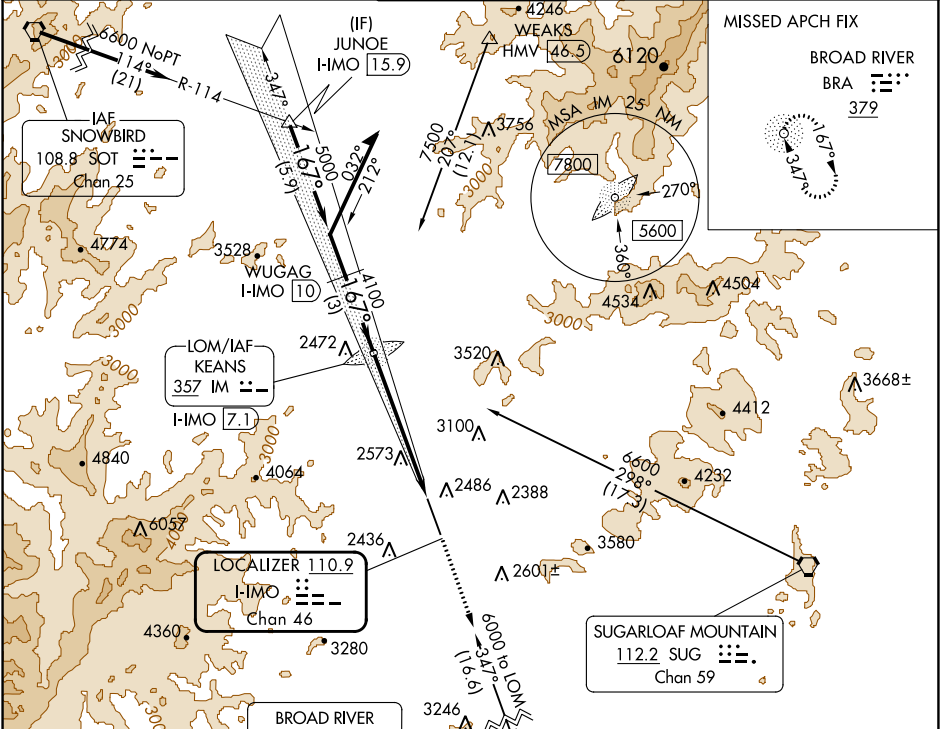
LOC/DME I-MO 110.9 Chan 46	APP CRS 167°	Rwy ldg 8002 TDZE 2164 Apt Elev 2164
--	------------------------	---

ILS or LOC RWY 17

ASHEVILLE RGNL (AVL)

ADF and DME required.		MALS	MISSED APPROACH: Climb to 5400 direct BRA NDB and hold. Continue climb-in-hold to 5400.
Circling NA west of Rwy 17-35.			

ATIS 120.2	ASHEVILLE APP CON* 124.65 351.8	ASHEVILLE TOWER* 121.1(CTAF) 0 257.8	GND CON 121.9	UNICOM 122.95
----------------------	---	--	-------------------------	-------------------------



Remain within 10 NM		KEANS LOM I-MO 7.1		5400 BRA	
5600		4012		*LOC only.	
GS 3.00° TCH 55		WUGAG I-MO 10		*I-MO 3 I-MO 1.5	
3 NM		3.9 NM		1.6 NM	
CATEGORY	A	B	C	D	
S-ILS 17		2364-1/2	200 (200-1/2)		
S-LOC 17	2720-1/2	556 (600-1/2)	2720-1 1/8	556 (600-1 1/8)	
CIRCLING	2800-1 636 (700-1)	2880-1 716 (800-1)	3540-3 1376 (1400-3)	3720-3 1556 (1600-3)	
ELEV 2164		D TDZE 2164		167°	
TWR 2223		0.3% DOWNSLOPE 8002 TO 50		0.3% UP	
TDZ/CL Rwy 35		HIRL Rwys 17-35		REIL Rwys 17 and 35	
FAF to MAP 5.5 NM		Knots		60 90 120 150 180	
		Min:Sec		5:30 3:40 2:45 2:12 1:50	

SE-2, 03 OCT 2024 to 31 OCT 2024

SE-2, 03 OCT 2024 to 31 OCT 2024