

LOC I-MWC <b>108.5</b>	APP CRS <b>148°</b>	Rwy Idg TDZE Apt Elev	<b>4107</b> <b>745</b> <b>745</b>
---------------------------	------------------------	-----------------------------	---

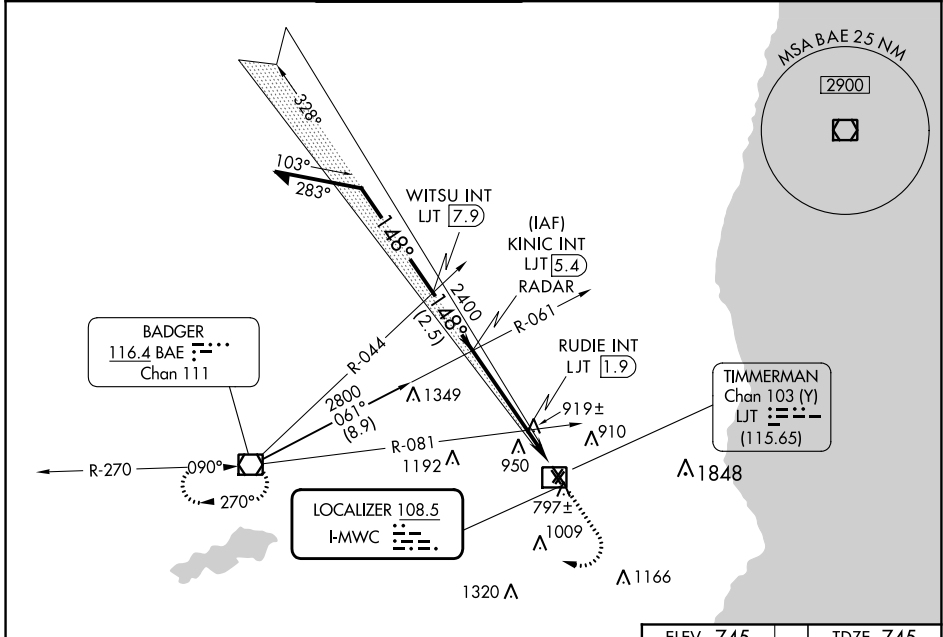
# LOC RWY 15L

LAWRENCE J TIMMERMAN (MWC)

**⚠** Circling NA to Rwys 4R, 15R, 22L and 33L. Rwy 15L helicopter visibility reduction below 3/4 SM NA. # Simultaneous reception of I-MWC and LJT DME required.

**⚠** MISSED APPROACH: Climb to 3000 then right turn direct BAE VOR/DME and hold.

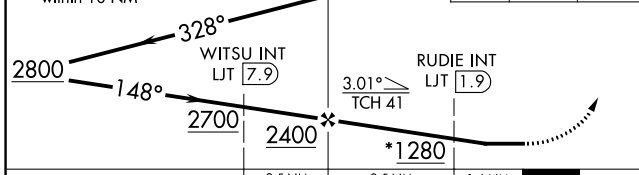
ATIS <b>128.3</b>	MILWAUKEE APP CON <b>125.35 307.0</b>	<b>TIMMERMAN TOWER ★</b> <b>120.5 (CTAF) ①</b>	GND CON <b>121.7</b>	CNLC DEL <b>121.7</b> (When twr closed)	UNICOM <b>122.95</b>
----------------------	--	---	-------------------------	---	-------------------------



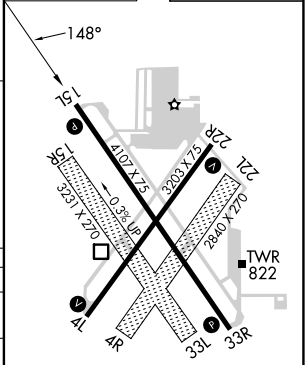
\* 1320 when using General Mitchell Intl altimeter setting. Remain within 10 NM

KINIC INT LJT 5.4 RADAR

3000 BAE



ELEV 745	TDZE 745
----------	----------



CATEGORY	A	B	C	D
S-LOC 15L	1280-1	535 (600-1)	1280-1½	535 (600-1½)
CIRCLING	1280-1 535 (600-1)	1340-1 595 (600-1)	1360-1¾ 615 (700-1¾)	1560-2¾ 815 (900-2¾)
RUDIE FIX MINIMUMS (DUAL VOR RECEIVERS OR DME REQUIRED #)				
S-LOC 15L	1180-1	435 (500-1)	1180-1¼	435 (500-1¼)
CIRCLING	1220-1 475 (500-1)	1340-1 595 (600-1)	1360-1¾ 615 (700-1¾)	1560-2¾ 815 (900-2¾)

REIL Rwys 4L, 15L, 22R and 33R ①  
MIRL Rwys 4L-22R and 15L-33R ①

FAF to MAP 5.1 NM

Knots	60	90	120	150	180
Min:Sec	5:06	3:24	2:33	2:02	1:42

EC-3, 03 OCT 2024 to 31 OCT 2024

EC-3, 03 OCT 2024 to 31 OCT 2024