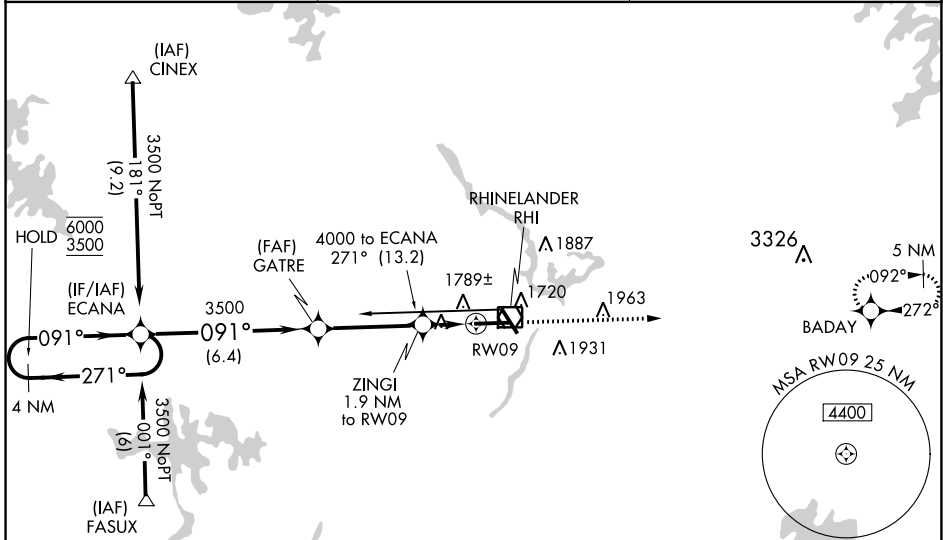


WAAS CH 97715 W09A	APP CRS 091°	Rwy Idg TDZE 1623 Apt Elev 1623	6799
--	------------------------	---	-------------

RNAV (GPS) RWY 9
RHINELANDER/ONEIDA COUNTY (RHI)

RNP APCH - GPS.	MALSR	MISSED APPROACH: Climb to 4500 direct BADAY and hold.
For uncompensated Baro-VNAV systems, LNAV/VNAV NA below -18°C or above 54°C. For inop ALS, increase LNAV Cats C/D visibility to 1½ SM.		

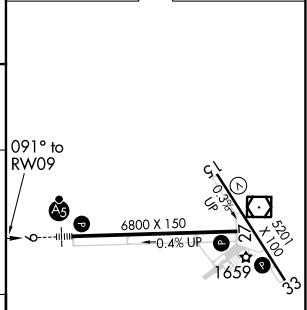
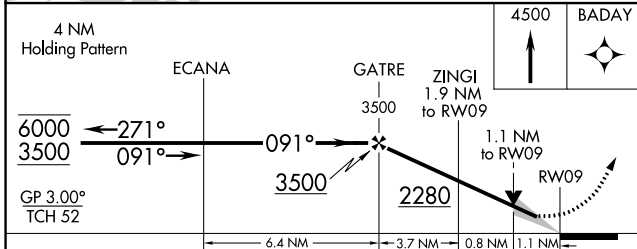
ASOS 126.825	MINNEAPOLIS CENTER 133.65 281.5	UNICOM 123.0 (CTAF)
------------------------	---	-------------------------------



EC-3, 03 OCT 2024 to 31 OCT 2024

EC-3, 03 OCT 2024 to 31 OCT 2024

ELEV 1623	D TDZE 1623
-----------	--------------------



CATEGORY	A	B	C	D
LPV DA		1823-½	200 (200-½)	
LNAV/VNAV DA		2050-¾	427 (500-¾)	
LNAV MDA	2040-½	417 (500-½)	2040-¾	417 (500-¾)
C CIRCLING	2100-1 477 (500-1)	2260-1 637 (700-1)	2260-1¾ 637 (700-1¾)	2280-2 657 (700-2)

HIRL Rwy 9-27 and 15-33
REIL Rwy 15, 27 and 33