

LOC/DME I-OIU 110.75	APP CRS 011°	Rwy ldg 9400
Chan 44 (Y)		TDZE 296
		Apt Elev 312

ILS or LOC RWY 1L

WASHINGTON DULLES INTL (IAD)

RNP APCH - GPS. From GNATZ.
DME or RADAR required. DME required for LOC only.
RADAR required for procedure entry at WABER.

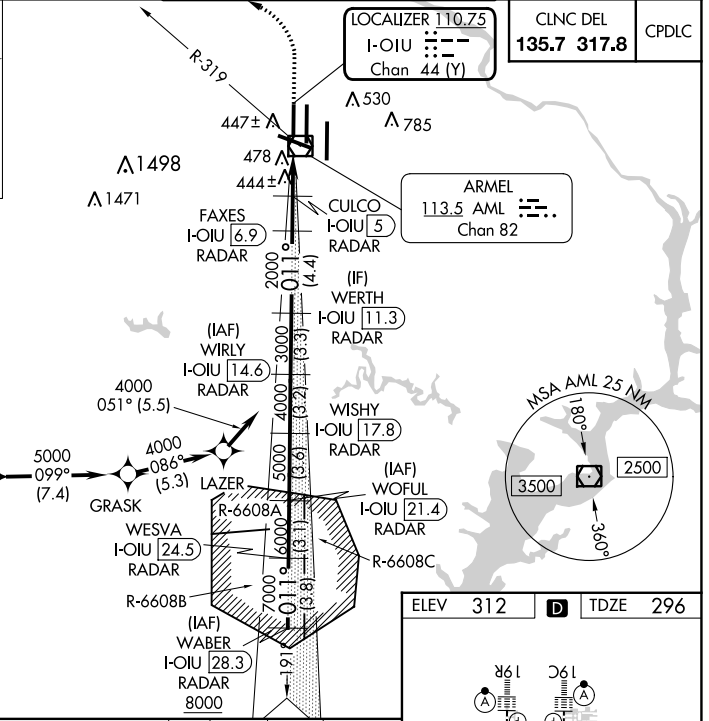
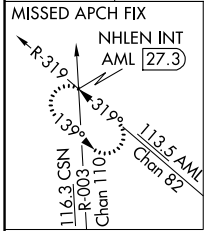
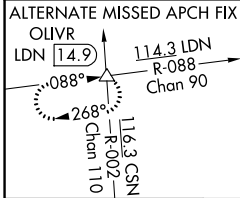
Simultaneous approach authorized.

For inop ALS, increase LOC Cats C/D visibility to RVR 5500.

ALSF-2

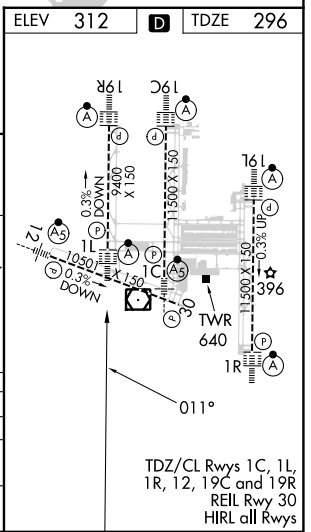
MISSED APPROACH: Climb to 800 then climbing left turn to 3000 on heading 276° and on AML VOR/DME R-319 to NHLEN INT/AML 27.3 DME and hold.

D-ATIS 134.85	POTOMAC APP CON 120.45 306.925 (241°-330°) 128.525 306.925 (091°-240°) 126.1 338.25 (331°-090°)	DULLES TOWER 120.1 317.8 (Rwy 1R/19L) 120.25 348.6 (Rwy 1C/19C) 134.425 348.6 (Rwys 1L/19R and 12/30)	GND CON 121.9 317.8 (EAST) 121.625 348.6 (WEST)
-------------------------	-------------------------------------------------------------------------------------------------------------------------------	-------------------------------------------------------------------------------------------------------------------------------------	---------------------------------------------------------------------



WABER I-OIU [28.3] RADAR	WOFUL I-OIU [21.4] RADAR	WIRLY I-OIU [14.6] RADAR	WERTH I-OIU [11.3] RADAR	FAXES I-OIU [6.9] RADAR	CULCO I-OIU [5] RADAR	I-OIU [2.6] RADAR	I-OIU [1.7] RADAR	NHLEN INT
WESHA I-OIU [24.5] RADAR	WISHY I-OIU [17.8] RADAR	WIRLY I-OIU [14.6] RADAR	WERTH I-OIU [11.3] RADAR	FAXES I-OIU [6.9] RADAR	CULCO I-OIU [5] RADAR	I-OIU [2.6] RADAR	I-OIU [1.7] RADAR	NHLEN INT
8000	7000	6000	5000	4000	3000	2000	1400	
3.8 NM	3.1 NM	3.6 NM	3.2 NM	3.3 NM	4.4 NM	1.9 NM	2.4	0.9

800 3000 AML NHLEN INT
hdg 276°
R-319
VGSi and ILS glidepath not coincident (VGSi Angle 3.00/TCH 70).



CATEGORY	A	B	C	D
S-ILS 1L	496/18		200 (200-½)	
S-LOC 1L	660/24	364 (400-½)	660/35 364 (400-¾)	
CIRCLING	940-1	628 (700-1)	940-1¾ 628 (700-1¾)	1180-2¾ 868 (900-2¾)

NE-3, 03 OCT 2024 to 31 OCT 2024

NE-3, 03 OCT 2024 to 31 OCT 2024