

APP CRS	Rwy ldg	<b>11089</b>
<b>191°</b>	TDZE	<b>272</b>
	Apt Elev	<b>312</b>

# RNAV (RNP) Z RWY 19C

WASHINGTON DULLES INTL (IAD)

RNP AR APCH - GPS.

▼ For uncompensated Baro-VNAV systems, procedure NA below -13°C or above 54°C. Simultaneous approach authorized. For inop ALS, increase RNP 0.11 visibility all Cats to RVR 4500, and RNP 0.25 visibility all Cats to RVR 5500.

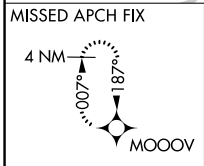
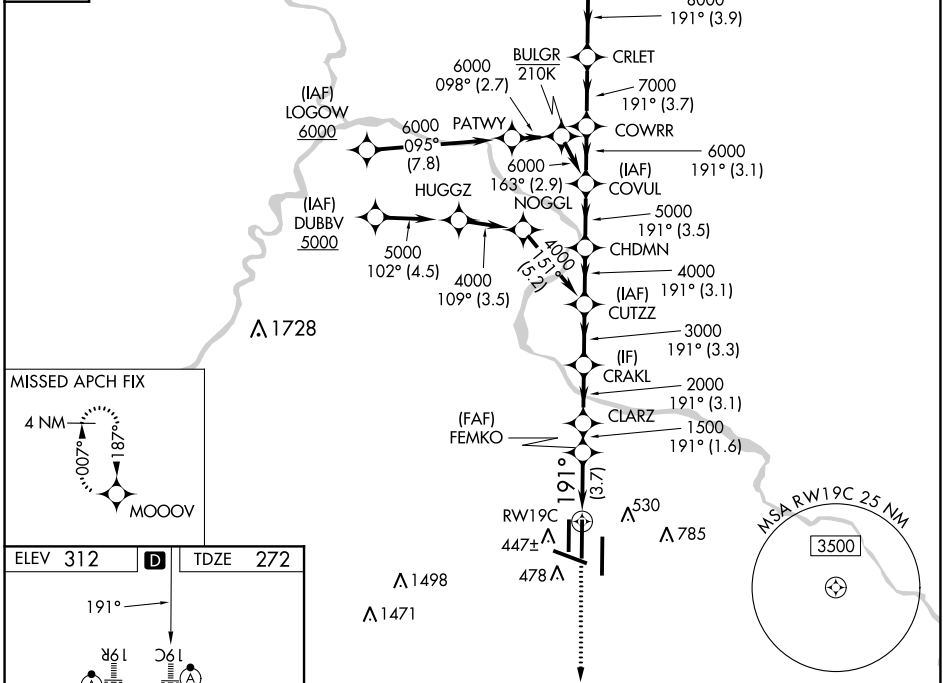


MISSED APPROACH: Climb to 3000 direct MOOOV and hold.

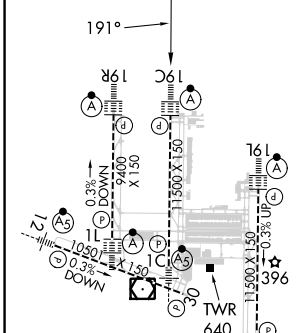
POTOMAC APP CON <b>120.45 306.925</b> (241°-330°) <b>128.525 306.925</b> (091°-240°) <b>126.1 338.25</b> (331°-090°)	DULLES TOWER <b>120.1 317.8</b> (Rwys 1R/19L) <b>120.25 348.6</b> (Rwys 1C/19C) <b>134.425 348.6</b> (Rwys 1L/19R and 12/30)	GND CON <b>121.9 317.8</b> (EAST) <b>121.625 348.6</b> (WEST)	CLNC DEL <b>135.7 317.8</b>
---	---	---	--------------------------------

D-ATIS  
**134.85**

CPDLC



ELEV 312	<b>D</b>	TDZE 272
----------	----------	----------



TDZ/CL Rwys 1C, 1L, 1R, 12, 19C and 19R
REIL Rwy 30
HIRL all Rwys

3000 MOOOV	VGSi and RNAV glidepath not coincident (VGSi Angle 3.00/TCH 72).							NOOX 9000	
	FEMKO	CLARZ	CRAKL	CUTZZ	CHDMN	COVUL	COWRR	CRLET	NOOX
	1500	2000	3000	4000	5000	6000	7000	8000	9000
	3.7 NM	1.6 NM	3.1 NM	3.3 NM	3.1 NM	3.5 NM	3.1 NM	3.7 NM	3.9 NM
									GP 3.00° TCH 54

CATEGORY	A	B	C	D
RNP 0.11 DA		554/24	282 (300-½)	
RNP 0.25 DA		624/30	352 (400-¾)	
RNP 0.30 DA		702/40	430 (400-¾)	

## AUTHORIZATION REQUIRED

NE-3, 03 OCT 2024 to 31 OCT 2024

NE-3, 03 OCT 2024 to 31 OCT 2024