

APP CRS	Rwy Idg	9400
011°	TDZE	296
	Apt Elev	312

RNAV (RNP) Z RWY 1L

WASHINGTON DULLES INTL (IAD)

RNP AR APCH - GPS.

ALSF-2



MISSED APPROACH: Climb to 800 then climbing left turn to 3000 direct NHLEN and hold.

▼ For uncompensated Baro-VNAV systems, procedure NA below -13°C or above 54°C. Simultaneous approach authorized. For inop ALS, increase RNP 0.11 all Cats visibility to RVR 4500 and RNP 0.30 all Cats visibility to RVR 6000.

POTOMAC APP CON 120.45 306.925 (241°-330°) 128.525 306.925 (091°-240°) 126.1 338.25 (331°-090°)	DULLES TOWER 120.1 317.8 (Rwy 1R/19L) 120.25 348.6 (Rwy 1C/19C) 134.425 348.6 (Rwys 1L/19R and 12/30)	GND CON 121.9 317.8 (EAST) 121.625 348.6 (WEST)	CLNC DEL 135.7 317.8
---	---	---	--------------------------------

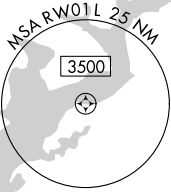
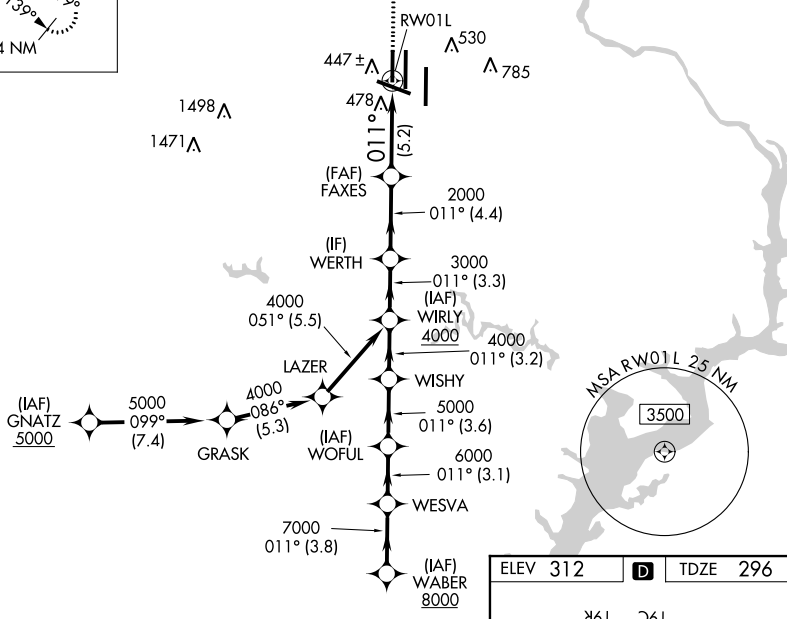
D-ATIS
134.85

MISSED APCH FIX



CPDLC

▲
2346



WABER WESVA WOFUL WIRLY WERTH FAXES RW01L
8000 7000 6000 5000 4000 3000 2000

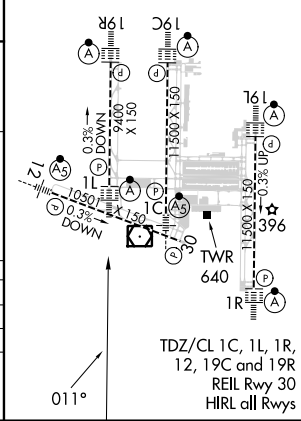
GP 3.00° TCH 55

3.8 NM 3.1 NM 3.6 NM 3.2 NM 3.3 NM 4.4 NM 5.2 NM

CATEGORY	A	B	C	D
RNP 0.11 DA		572/24	276 (300-½)	
RNP 0.30 DA		710/40	414 (400-¾)	

AUTHORIZATION REQUIRED

ELEV 312 TDZE 296



TDZ/CL 1C, 1L, 1R, 12, 19C and 19R
REIL Rwy 30
HIRL all Rwys

NE-3, 03 OCT 2024 to 31 OCT 2024

NE-3, 03 OCT 2024 to 31 OCT 2024