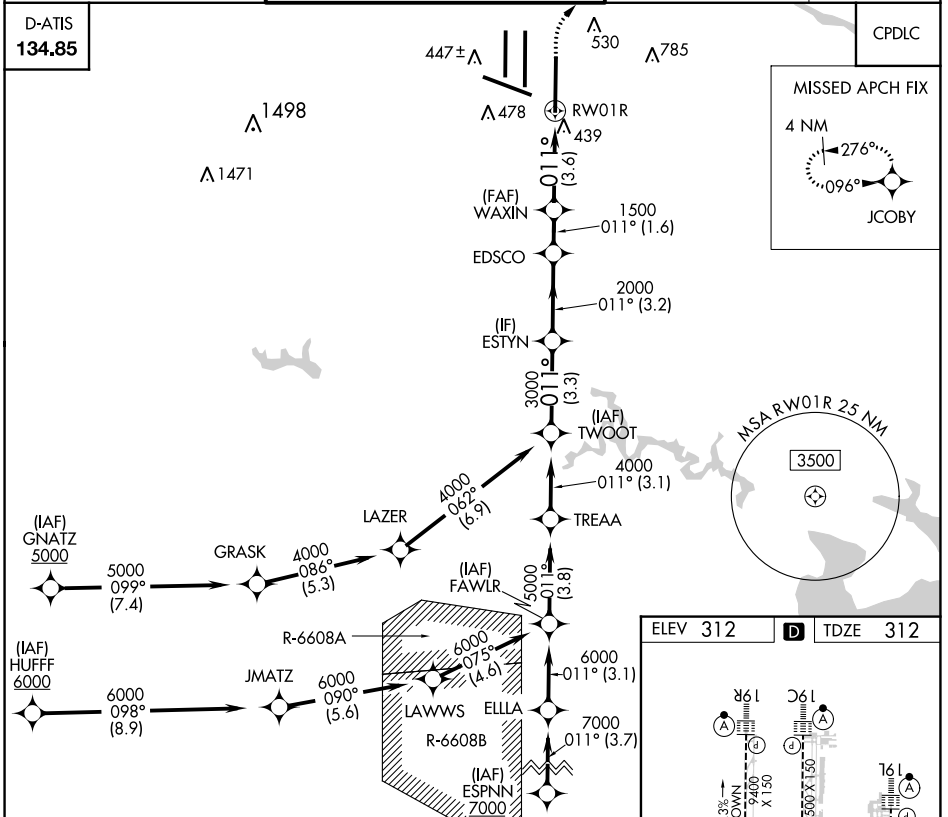


APP CRS	Rwy Idg	11500
011°	TDZE	312
	Apt Elev	312

RNAV (RNP) Z RWY 1R

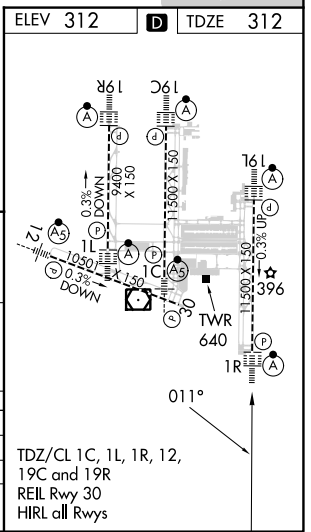
WASHINGTON DULLES INTL (IAD)

RNP AR APCH - GPS.		ALSIF-2	MISSED APPROACH: Climb to 800 then climbing right turn to 3000 direct JCOBY and hold.
▼ For uncompensated Baro-VNAV systems, procedure NA below -13°C or above 54°C. For inop ALS, increase RNP 0.11 all Cats visibility to RVR 4500. Simultaneous approach authorized.			
POTOMAC APP CON	DULLES TOWER	GND CON	CLNC DEL
120.45 306.925 (241°-330°)	120.1 317.8 (Rwy 1R/19L)	121.9 317.8 (EAST)	135.7 317.8
128.525 306.925 (091°-240°)	120.25 348.6 (Rwy 1C/19C)	121.625 348.6 (WEST)	
126.1 338.25 (331°-090°)	134.425 348.6 (Rwys 1L/19R and 12/30)		



TWOOT	ESTYN	EDSCO	WAXIN	800	3000	JCOBY
4000	3000	2000	1500	↑	↷	✧
GP 3.00° TCH 55	011° 3000	011° 2000	011° 1500			
	3.3 NM	3.2 NM	1.6 NM		3.6 NM	
CATEGORY	A	B	C	D		
RNP 0.11 DA		625/24	313 (400-½)			
RNP 0.30 DA		770/45	458 (500-¾)			

AUTHORIZATION REQUIRED



NE-3, 03 OCT 2024 to 31 OCT 2024

NE-3, 03 OCT 2024 to 31 OCT 2024