

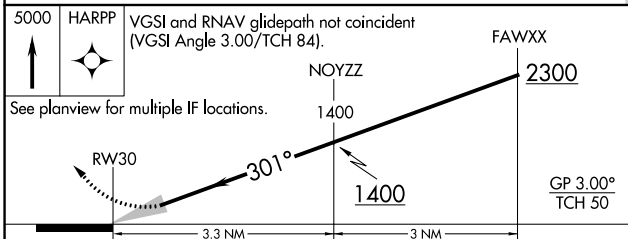
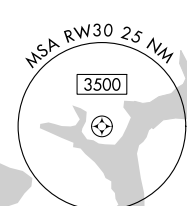
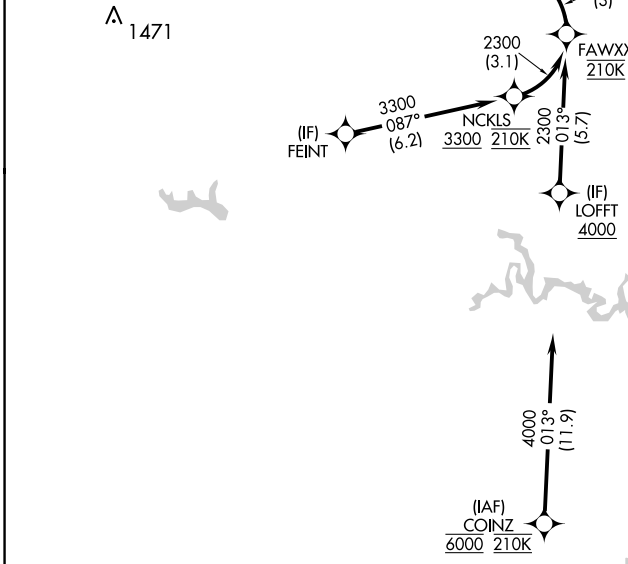
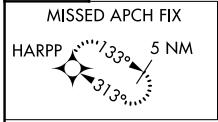
APP CRS	Rwy Idg	<b>10501</b>
<b>301°</b>	TDZE	<b>288</b>
	Apt Elev	<b>312</b>

# RNAV (RNP) Z RWY 30

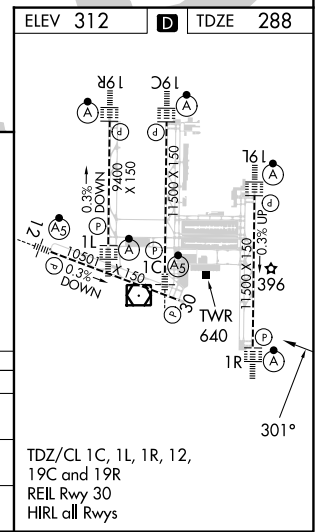
WASHINGTON DULLES INTL (IAD)

RNP AR APCH - GPS.		MISSED APPROACH: Climb to 5000 direct HARPP and hold.	
For uncompensated Baro-VNAV systems, procedure NA below -13°C or above 54°C.			
POTOMAC APP CON <b>120.45 306.925</b> (241°-330°) <b>128.525 306.925</b> (091°-240°) <b>126.1 338.25</b> (331°-090°)		DULLES TOWER <b>120.1 317.8</b> (Rwys 1R/19L) <b>120.25 348.6</b> (Rwys 1C/19C) <b>134.425 348.6</b> (Rwys 1L/19R and 12/30)	
		GND CON <b>121.9 317.8</b> (EAST) <b>121.625 348.6</b> (WEST)	
		CLNC DEL <b>135.7 317.8</b>	

D-ATIS <b>134.85</b>	CPDLC
-------------------------	-------



5000 HARPP	VGSi and RNAV glidepath not coincident (VGSi Angle 3.00/TCH 84).			
See planview for multiple IF locations.	FAWXX 2300			
	NOYZZ 1400			
	RWY 30 301°			
	GP 3.00° TCH 50			
	3.3 NM      3 NM			



NE-3, 03 OCT 2024 to 31 OCT 2024

NE-3, 03 OCT 2024 to 31 OCT 2024

**AUTHORIZATION REQUIRED**

TDZ/CL 1C, 1L, 1R, 12, 19C and 19R  
REIL Rwy 30  
HIRL all Rwys