

WAAS CH 40305 W19B	APP CRS 191°	Rwy ldg 11089 TDZE 272 Apt Elev 312
--	------------------------	--

RNAV (GPS) Y RWY 19C

WASHINGTON DULLES INTL (IAD)

RNP APCH - GPS.

Simultaneous approach authorized. LNAV procedure NA during simultaneous operations.
 Use of FD or AP required during simultaneous operations. For uncompensated Baro-VNAV systems, LNAV/VNAV NA below -13°C or above 54°C.

ALSIF-2

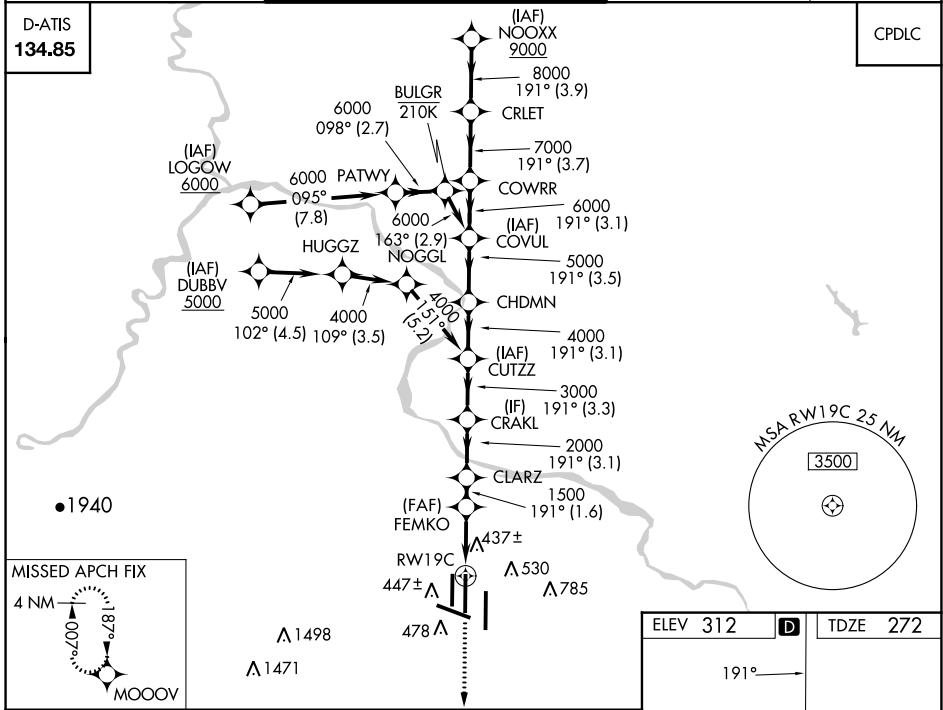


MISSED APPROACH:
Climb to 3000 direct
MOOOV and hold.

POTOMAC APP CON 120.45 306.925 (241°-330°) 128.525 306.925 (091°-240°) 126.1 338.25 (331°-090°)	DULLES TOWER 120.1 317.8 (Rwys 1R/19L) 120.25 348.6 (Rwys 1C/19C) 134.425 348.6 (Rwys 1L/19R and 12/30)	GND CON 121.9 317.8 (EAST) 121.625 348.6 (WEST)	CLNC DEL 135.7 317.8
---	---	---	--------------------------------

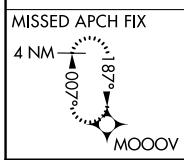
D-ATIS
134.85

CPDLC



NE-3, 03 OCT 2024 to 31 OCT 2024

NE-3, 03 OCT 2024 to 31 OCT 2024



ELEV 312	D	TDZE 272
----------	----------	----------

3000	MOOOV	VGSI and RNAV glidepath not coincident (VGSI Angle 3.00/TCH 72).				NOOXX	
		FEMKO	CUTZZ	CHDMN	COVUL	COWRR	CRLET
		1.1 NM to RWY 19C	1.6 NM	3.1 NM	3.3 NM	3.1 NM	3.9 NM
		1500	2000	3000	4000	5000	6000
		1.1	2.6	1.6	3.1	3.3	3.1
		1.1	2.6	1.6	3.1	3.3	3.1
CATEGORY		A	B	C	D		
LPV DA			472/18	200 (200-1/2)			
LNAV/VNAV DA			700/40	428 (400-3/4)			
LNAV MDA		700/24	428 (400-1/2)	700/40	428 (400-3/4)		
CIRCLING		940-1	628 (700-1)	940-1 3/4	628 (700-1 3/4)	1180-2 3/4	868 (900-2 3/4)

