

TOP ALTITUDE:
3000

ATIS
125.85
GND CON
121.7
AURORA TOWER ★
120.6
CHICAGO DEP CON
133.5 349.0

TAKEOFF MINIMUMS:

Rwys 9, 15, 18, 27, 33, 36: Standard.

NOTE: RADAR required.

NOTE: DME/DME/IRU or GPS required.

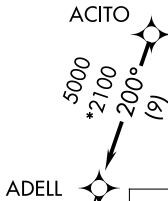
NOTE: RNAV 1.

NOTE: Turbojet departures maintain 250K until advised by ATC.

NOTE: AKMIE Transition: For aircraft inbound to BMI, SPI, PIA, or as assigned by ATC.

EC-3, 03 OCT 2024 to 31 OCT 2024

EC-3, 03 OCT 2024 to 31 OCT 2024



ADELL

▼ DEPARTURE ROUTE DESCRIPTION

TAKEOFF RUNWAY 9: Climb heading 090° to 1220, then as assigned by ATC, for vectors to ACITO. Thence. . . .

TAKEOFF RUNWAY 15: Climb heading 148° to 1220, then as assigned by ATC, for vectors to ACITO. Thence. . . .

TAKEOFF RUNWAY 18: Climb heading 181° to 1220, then as assigned by ATC, for vectors to ACITO. Thence. . . .

TAKEOFF RUNWAY 27: Climb heading 270° to 1220, then as assigned by ATC, for vectors to ACITO. Thence. . . .

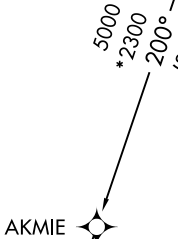
TAKEOFF RUNWAY 33: Climb heading 328° to 1220, then as assigned by ATC, for vectors to ACITO. Thence. . . .

TAKEOFF RUNWAY 36: Climb heading 001° to 1220, then as assigned by ATC, for vectors to ACITO. Thence. . . .

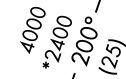
. . . . on track 200° to ADELL, then on (transition). Maintain 3000. Expect filed altitude 10 minutes after departure.

AKMIE TRANSITION (ADELL6.AKMIE):

ARLYN TRANSITION (ADELL6.ARLYN):



AKMIE



ARLYN

NOTE: Chart not to scale.