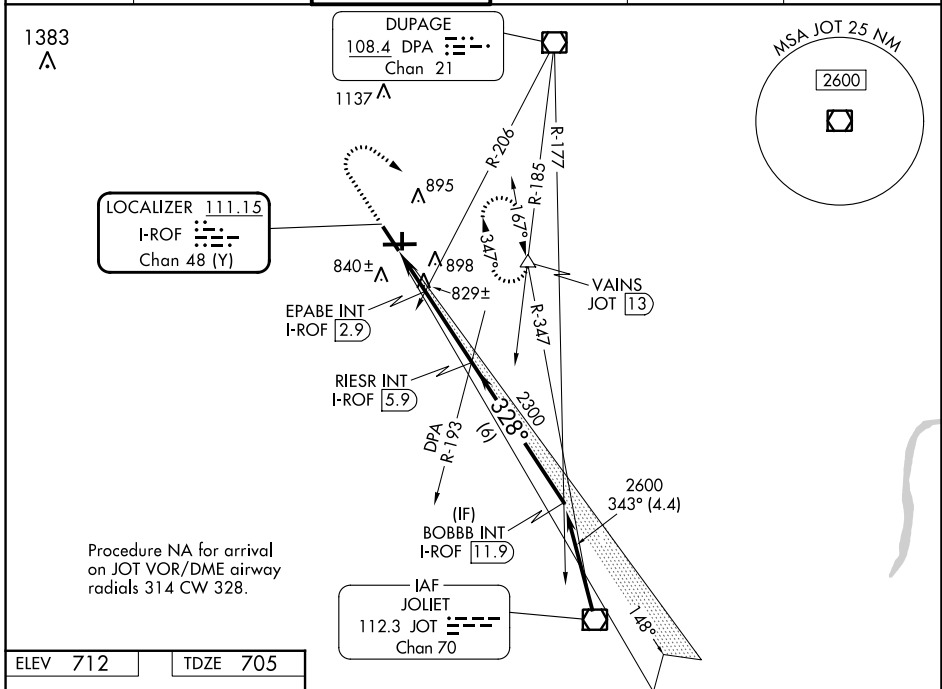


LOC/DME I-ROF 111.15 Chan 48 (Y)	APP CRS 328°	Rwy Ldg TDZE Apt Elev	5503 705 712
--	------------------------	-----------------------------	---

LOC RWY 33

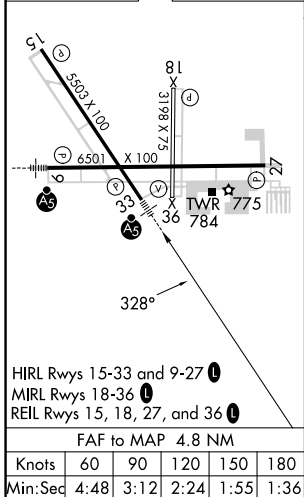
AURORA MUNI (A.R.R.)

<p>▽ For inop ALS, increase S-LOC 33 Cats C and D visibility to 1 3/4 SM and EPABE FIX minimums S-LOC 33 Cats C and D visibility to 1 SM.</p>	<p>MALSR </p>	<p>MISSED APPROACH: Climb to 1400 then climbing right turn to 3000 on heading 146° and JOT VOR/DME R-347 to VAINS INT/JOT 13 DME and hold, continue climb-in-hold to 3000.</p>			
<p>ATIS 125.85</p>	<p>CHICAGO APP CON 133.5 349.0</p>	<p>AURORA TOWER* 120.6 (CTAF) 0</p>	<p>GND CON 121.7</p>	<p>CLNC DEL 121.7 (When tower closed)</p>	<p>UNICOM 122.95 123.5</p>



Procedure NA for arrival on JOT VOR/DME airway radials 314 CW 328.

ELEV 712	TDZE 705
----------	----------



1400	3000	JOT R-347	VAINS	RIESR INT I-ROF 5.9	BOBBB INT I-ROF 11.9
↑	hdg 146°		△		
EPABE INT I-ROF 2.9		I-ROF 1.1		I-ROF 2.1	
1320		2300		2600	
1 NM		0.8 NM		3 NM	
3.04°		TCH 48		328°	
CATEGORY		A		B	
S-LOC 33		1320-1/2		615 (700-1/2)	
CIRCLING		1320-1		608 (700-1)	
EPABE FIX MINIMUMS (DUAL VOR RECEIVERS or DME REQUIRED)		S-LOC 33		1080-1/2	
CIRCLING		1200-1		488 (500-1)	
S-LOC 33		1080-5/8		375 (400-5/8)	
CIRCLING		1300-1/2		588 (600-1/2)	
S-LOC 33		1320-1 3/4		608 (700-1 3/4)	
CIRCLING		1320-2		608 (700-2)	

EC-3, 03 OCT 2024 to 31 OCT 2024

EC-3, 03 OCT 2024 to 31 OCT 2024