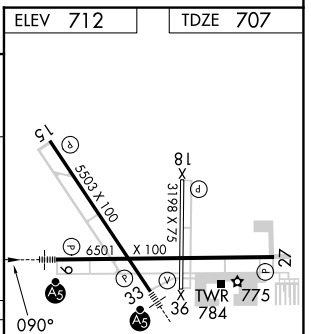
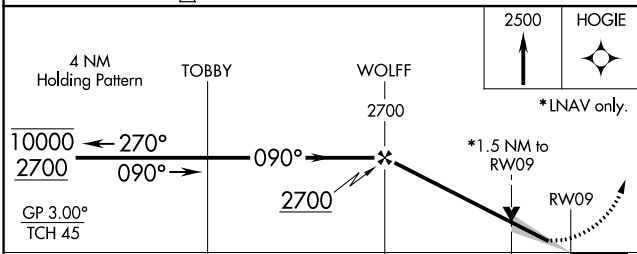
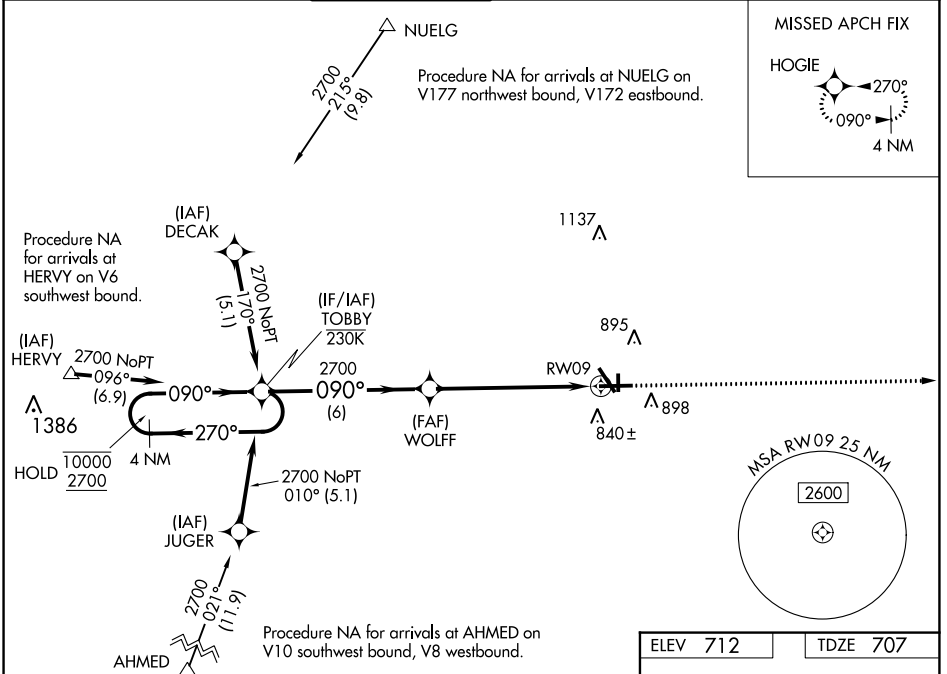


WAAS CH <b>45522</b> <b>W09A</b>	APP CRS <b>090°</b>	Rwy Idg <b>6501</b> TDZE <b>707</b> Apt Elev <b>712</b>
--	------------------------	---

# RNAV (GPS) RWY 9

AURORA MUNI (A.R.R.)

RNP APCH - GPS.		AURORA TOWER* <b>120.6</b> (CTAF) <b>0</b>		GND CON <b>121.7</b>	CLNC DEL <b>121.7</b> (When tower closed)	UNICOM <b>122.95 123.5</b>
<p>⚠ For uncompensated Baro-VNAV systems, LNAV/VNAV NA below -20°C or above 54°C. For inop APCH, increase LNAV Cat C/D visibility to 1½ SM.</p>		MALSRL		MISSED APPROACH: Climb to 2500 direct HOGIE and hold.		



CATEGORY	A	B	C	D
LPV DA	957-½		250 (300-½)	
LNAV/VNAV DA	1035-½		328 (400-½)	
LNAV MDA	1220-½ 513 (600-½)		1220-1 513 (600-1)	
CIRCLING	1220-1 508 (600-1)		1300-1½ 588 (600-1½) 1320-2 608 (700-2)	

MIRL Rwy 18-36 **0**  
HIRL Rwy 15-33 and 9-27 **0**  
REIL Rwy 15, 18, 27, and 36 **0**

EC-3, 03 OCT 2024 to 31 OCT 2024

EC-3, 03 OCT 2024 to 31 OCT 2024