

|                           |                        |                             |   |
|---------------------------|------------------------|-----------------------------|---|
| LOC I-FRL<br><b>109.3</b> | APP CRS<br><b>339°</b> | Rwy Idg<br>TDZE<br>Apt Elev | <b>8500</b><br><b>329</b><br><b>346</b> |
|---------------------------|------------------------|-----------------------------|---|

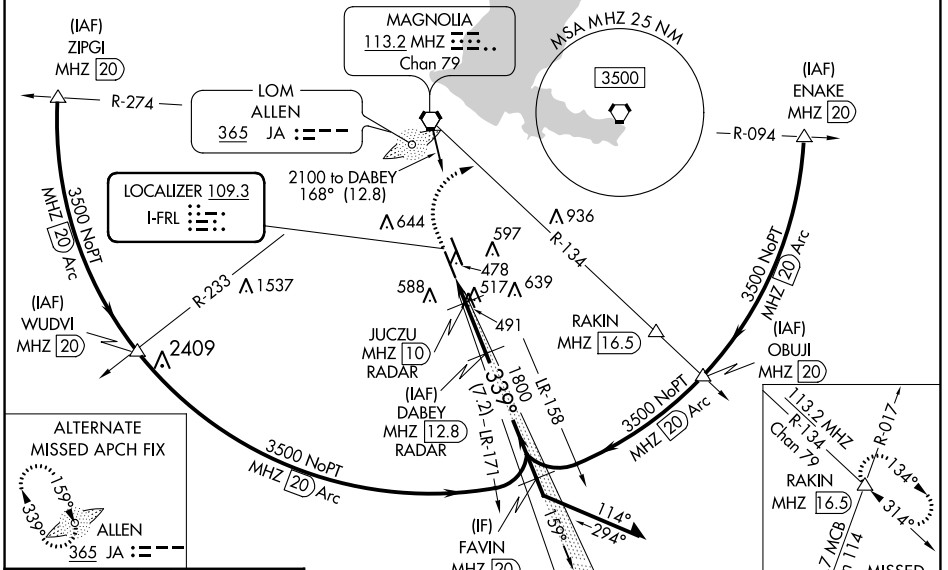
# ILS or LOC RWY 34L

JACKSON-MEDGAR WILEY EVERS INTL (JAN)

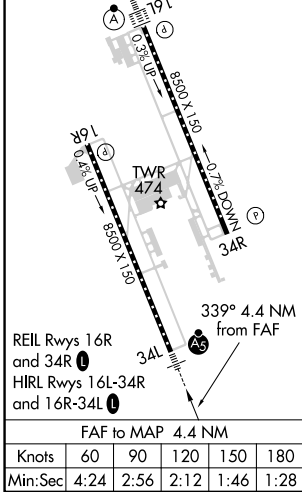
**⚠** Circling NA for Cat E southwest of Rwy 16R-34L. DME or RADAR required. When local altimeter setting not received, use Hawkins Fld altimeter setting and increase all DA 19 feet and all MDA 20 feet; increase S-ILS 34L visibility to RVR 4000. For inop ALS, increase S-ILS 34L Cat E visibility to RVR 4000 and S-LOC 34L all Cats visibility to 1 1/2 SM. For inop ALS when using Hawkins Fld altimeter setting, increase S-LOC 34L Cat E visibility to 1 1/2 SM. Inop table does not apply to S-ILS 34L when using Hawkins Fld altimeter setting. Rwy 34L helicopter visibility reduction below RVR 4000 NA. Procedure turn NA for Cat E. #DME from MHZ VORTAC.

**MALS** MISSED APPROACH: Climb to 1200 then climbing right turn to 3000 on heading 070° and MHZ VORTAC R-134 to RAKIN INT/MHZ 16.5 DME and hold.

|                       |  |   |                               |                         |
|-----------------------|--|---|-------------------------------|-------------------------|
| ATIS<br><b>121.05</b> | JACKSON APP CON*<br><b>123.9 317.7</b> | JACKSON TOWER*<br><b>120.9 (CTAF) 0 352.0</b> | GND CON<br><b>121.7 348.6</b> | UNICOM<br><b>122.95</b> |
|-----------------------|--|---|-------------------------------|-------------------------|



|          |          |
|----------|----------|
| ELEV 346 | TDZE 329 |
|----------|----------|



**1200** **3000** **RAKIN** **DABEY** **\*\*860** when using Hawkins Fld altimeter setting.

**\*\*LOC only.** **JUCZU** **RAKIN** **DABEY**

MHZ R-134 **MHZ 12.8** **MHZ 16.5** **MHZ 12.8**

**1800** **159°** **2100** **339°** **1800** **159°**

**\*\*840** **1800** **159°** **2100** **339°** **1800**

**GS 3.00°** **TCH 58**

| CATEGORY             | A                    | B             | C               | D           | E               |
|----------------------|----------------------|---------------|-----------------|-------------|-----------------|
| S-ILS 34L            | 529/18 200 (200-1/2) |               |                 |             |                 |
| S-LOC 34L            | 840/40               | 511 (500-3/4) | 840/55          |             | 511 (500-1)     |
| CIRCLING             | 880-1                | 900-1         | 900-1 1/2       | 960-2       | 1040-2 1/2      |
|                      | 534 (600-1)          | 554 (600-1)   | 554 (600-1 1/2) | 614 (700-2) | 694 (700-2 1/2) |
| JUCZU DME MINIMUMS # |                      |               |                 |             |                 |
| S-LOC 34L            | 760/40 431 (500-3/4) |               |                 |             |                 |
| CIRCLING             | 880-1                | 900-1         | 900-1 1/2       | 960-2       | 1040-2 1/2      |
|                      | 534 (600-1)          | 554 (600-1)   | 554 (600-1 1/2) | 614 (700-2) | 694 (700-2 1/2) |

SC-4, 03 OCT 2024 to 31 OCT 2024

SC-4, 03 OCT 2024 to 31 OCT 2024