

MHZ VORTAC 113.2 Chan 79	APP CRS 171°	Rwy ldg 8500 TDZE 312 Apt Elev 346
----------------------------------------------	------------------------	---------------------------------------------------------------

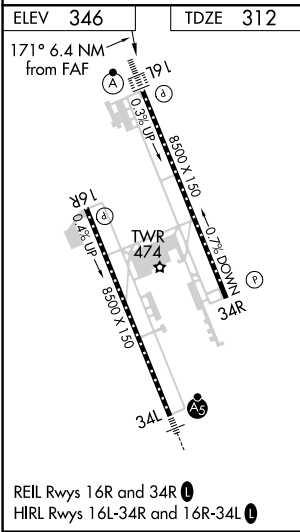
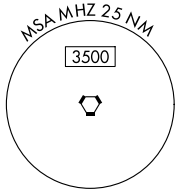
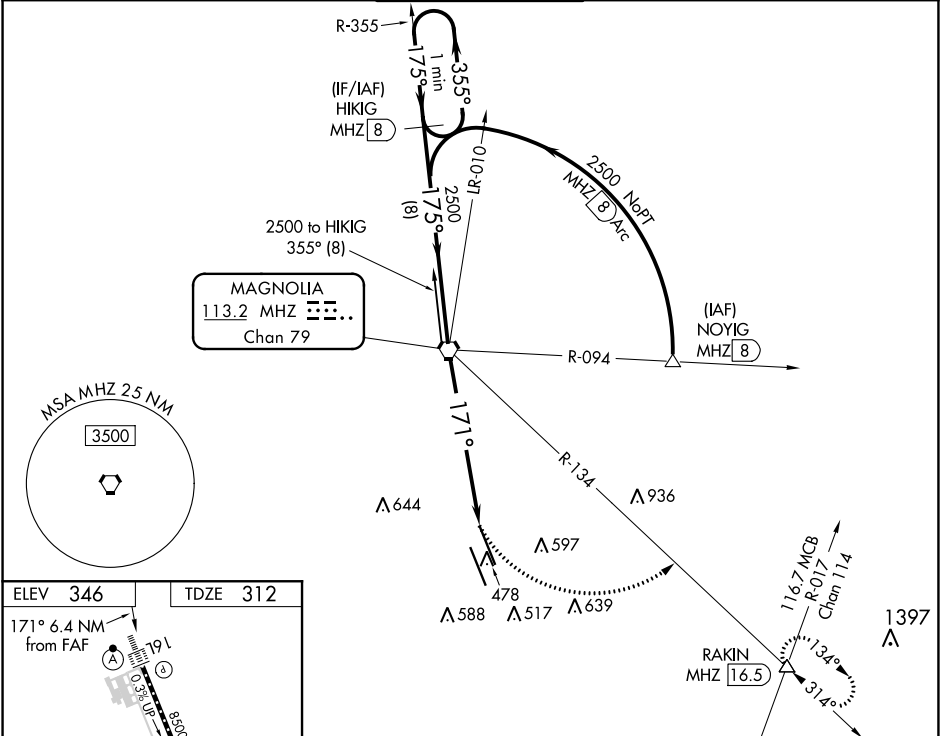
VOR/DME or TACAN RWY 16L

JACKSON-MEDGAR WILEY EVERS INTL (JAN)

▽ VDP NA with Hawkins Fld altimeter setting. When local altimeter setting not received, use Hawkins Fld altimeter setting and increase all MDA 20 feet; increase S-16L Cats C/D/E visibility to 1½ mile. For inop ALSF, increase S-16L Cats A/B visibility to 1 mile; Cat E to 1½. For inop ALSF when using Hawkins Fld altimeter setting, increase S-16L Cats A/B visibility to 1 mile, and Cats C/D/E visibility to 1½. Circling NA for Cat E southwest of Rwy 16R-34L. Helicopter visibility reduction below ¾ SM NA.

ALSF-2
△ MISSED APPROACH: Climbing left turn to 3000 on heading 103° and MHZ VORTAC R-134 to RAKIN INT/ MHZ 16.5 DME and hold.

ATIS 121.05	JACKSON APP CON * 123.9 317.7	JACKSON TOWER * 120.9 (CTAF) 352.0	GND CON 121.7 348.6	UNICOM 122.95
-----------------------	-----------------------------------------	----------------------------------------------	-------------------------------	-------------------------



One Minute Holding Pattern	HIKIG MHZ 8	MHZ VORTAC	3000 hdg 103°	MHZ R-134	RAKIN △
2500	← 355°	← 175°	← 171°	MHZ 4.9	MHZ 6.4
8 NM		4.9 NM		1.5	
CATEGORY	A	B	C	D	E
S-16L	860/40	548 (600-¾)	860/60	548 (600-1½)	
C CIRCLING	880-1 534 (600-1)	900-1 554 (600-1)	900-1½ 554 (600-1½)	960-2 614 (700-2)	1040-2½ 694 (700-2½)

SC-4, 03 OCT 2024 to 31 OCT 2024

SC-4, 03 OCT 2024 to 31 OCT 2024