

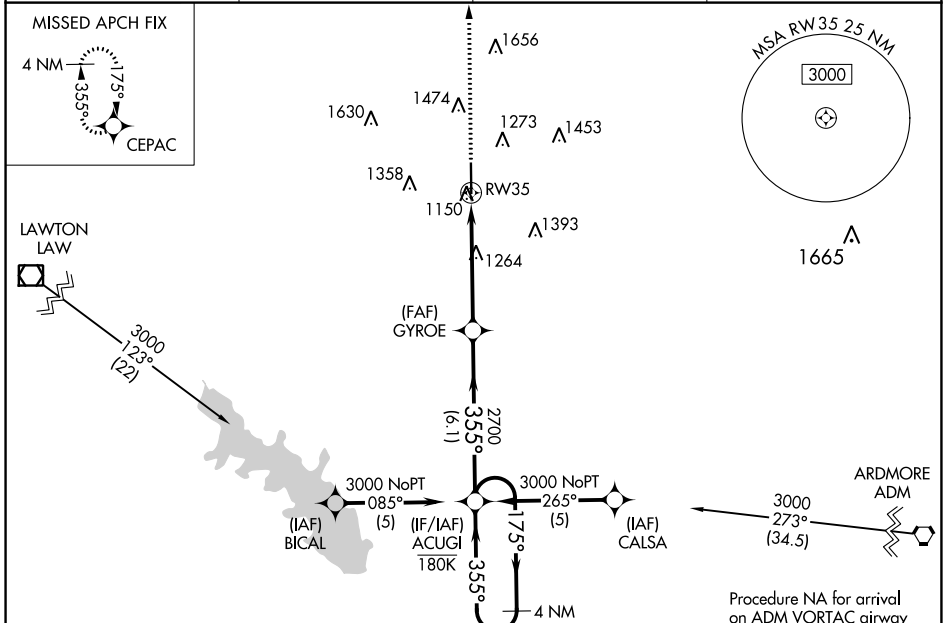
WAAS CH 40241 W35A	APP CRS 355°	Rwy Idg TDZE Apt Elev	6325 1094 1114
--	------------------------	-----------------------------	---

RNAV (GPS) RWY 35

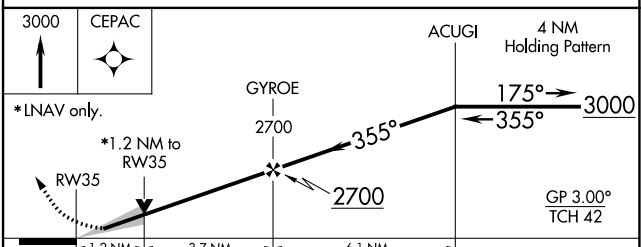
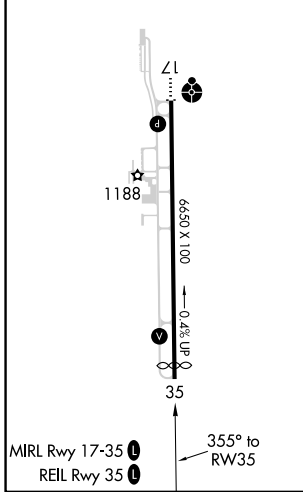
HALLIBURTON FLD (DUC)

RNP APCH. ▼ For uncompensated Baro-VNAV systems, LNAV/VNAV NA below -17°C or above 54°C.	MISSED APPROACH: Climb to 3000 direct CEPAC and hold.
---	---

AWOS-3 119.075	FORT SILL APP CON 118.6 290.375	CLNC DEL 118.4	UNICOM 122.8 (CTAF)
--------------------------	---	--------------------------	-------------------------------



ELEV 1114	D	TDZE 1094
-----------	----------	-----------



CATEGORY	A	B	C	D
LPV DA		1294- ³ / ₄	200 (200- ³ / ₄)	
LNAV/VNAV DA		1397- ⁷ / ₈	303 (300- ⁷ / ₈)	
LNAV MDA	1520-1	426 (500-1)	1520-1 ¹ / ₄	426 (500-1 ¹ / ₄)
C CIRCLING	1560-1 446 (500-1)	1580-1 466 (500-1)	1780-1 ³ / ₄ 666 (700-1 ³ / ₄)	1780-2 666 (700-2)

SC-1, 03 OCT 2024 to 31 OCT 2024

SC-1, 03 OCT 2024 to 31 OCT 2024