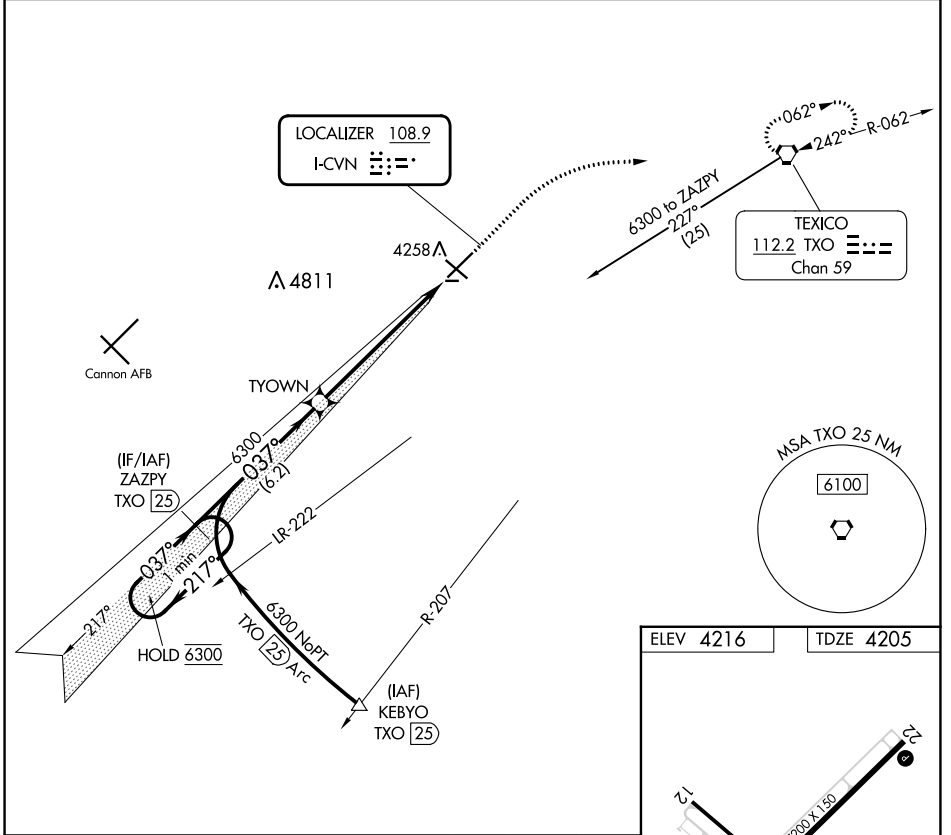


LOC I-CVN 108.9	APP CRS 037°	Rwy Idg TDZE Apt Elev	7200 4205 4216
---------------------------	------------------------	-----------------------------	---

ILS RWY 4

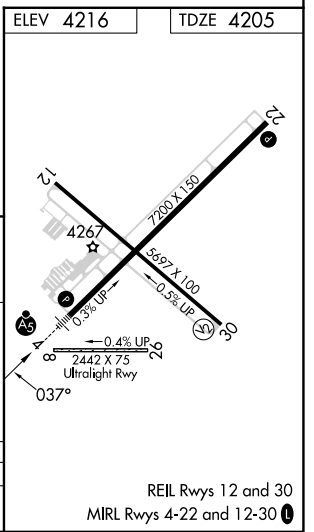
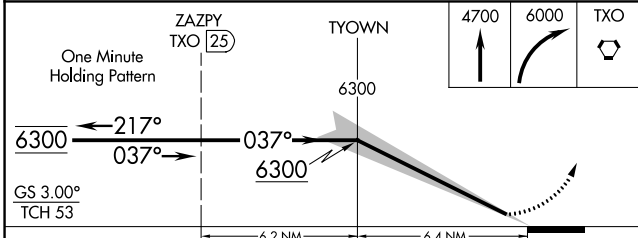
CLOVIS RGNL (CVN)

DME required.		MALSR	MISSED APPROACH: Climb to 4700 then climbing right turn to 6000 direct TXO VORTAC and hold.
AWOS-3PT 135.375	CANNON APP CON 118.425 352.1	CLNC DEL 119.0	UNICOM 122.8 (CTAF) 0



SW-1, 03 OCT 2024 to 31 OCT 2024

SW-1, 03 OCT 2024 to 31 OCT 2024



CATEGORY	A	B	C	D
S-ILS 4		4405-1/2	200 (200-1/2)	

REIL Rwy's 12 and 30
MIRL Rwy's 4-22 and 12-30