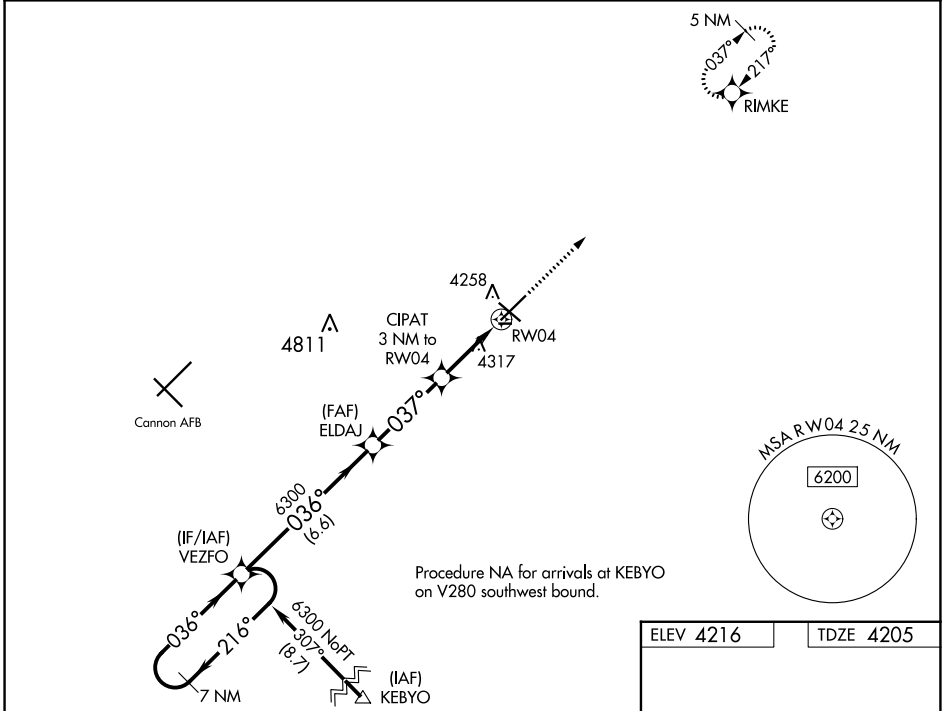


WAAS CH 97300 W04A	APP CRS 037°	Rwy Idg 7200 TDZE 4205 Apt Elev 4216
--	------------------------	---

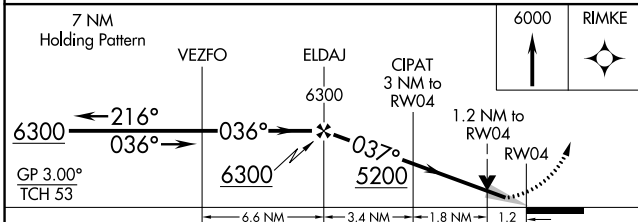
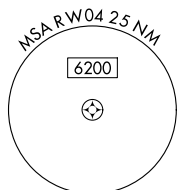
RNAV (GPS) RWY 4

CLOVIS RGNL (CVN)

RNP APCH - GPS.		MALSR	MISSED APPROACH: Climb to 6000 direct RIMKE and hold.
<p>⚠ For uncompensated Baro-VNAV systems, LNAV/VNAV NA below -23°C or above 49°C. For inop ALS, increase LNAV/VNAV all Cats visibility to ¾ SM. Circling NA to Rwy 8 and 26.</p>			
AWOS-3PT 135.375	CANNON APP CON 118.425 352.1	CLNC DEL 119.0	UNICOM 122.8 (CTAF) 0



Procedure NA for arrivals at KEYBYO on V280 southwest bound.



ELEV 4216	TDZE 4205
-----------	-----------

CATEGORY	A	B	C	D
LPV DA		4405-½	200 (200-½)	
LNAV/VNAV DA		4455-½	250 (300-½)	
LNAV MDA	4640-½	435 (500-½)	4640-¾	435 (500-¾)
CIRCLING	4680-1	464 (500-1)	4700-1½ 484 (500-1½)	4820-2 604 (700-2)

SW-1, 03 OCT 2024 to 31 OCT 2024

SW-1, 03 OCT 2024 to 31 OCT 2024