

LOC/DME I-DLGL 111.9 Chan 56	APP CRS 196°	Rwy Idg 6400 TDZE 81 Apt Elev 82
--	------------------------	---

LOC RWY 19

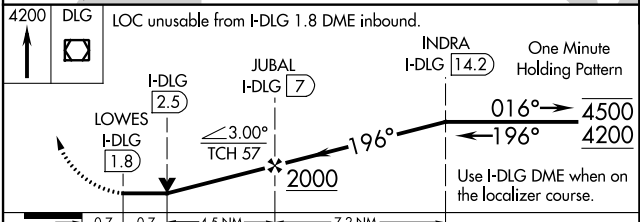
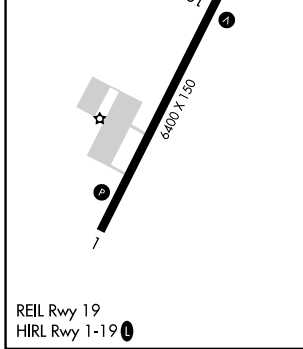
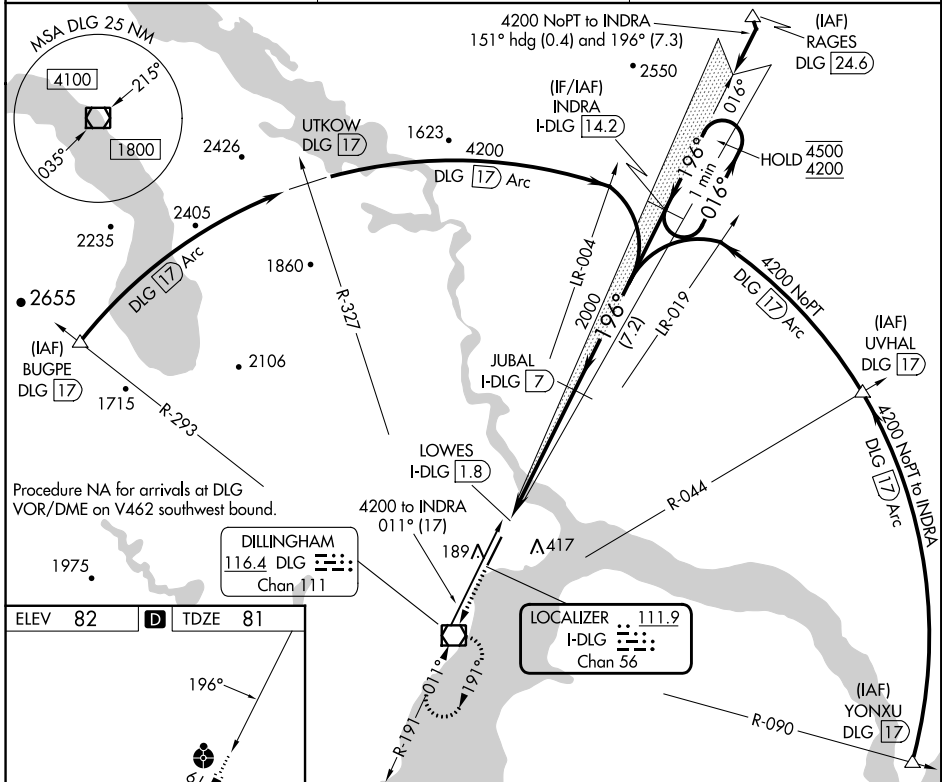
DILLINGHAM (DLG)(PADL)

DME required.

⚠ Circling NA east of Rwy 1-19. VDP NA with Manokotak altimeter setting. When local altimeter setting not received, use Manokotak altimeter setting and increase all MDAs 40 feet and S-LOC 19 visibility Cat C/D 1/8 SM. Inop table does not apply to S-LOC 19 Cats A/B. Inop table does not apply when using Manokotak altimeter setting. Rwy 19 helicopter visibility reduction below 3/4 SM NA.

ODALS MISSED APPROACH: Climb to 4200 direct DLG VOR/DME and hold, continue climb-in-hold to 4200.

AFIS 125.0	ANCHORAGE CENTER 132.75 282.35	DILLINGHAM RADIO 123.6 (CTAF)
----------------------	--	---



CATEGORY	A	B	C	D
S-LOC 19	560-1 479 (500-1)		560-1 1/4 479 (500-1 1/4)	
CIRCLING	560-1 478 (500-1)		700-1 3/4 618 (700-1 3/4)	700-2 618 (700-2)

AK, 05 SEP 2024 to 31 OCT 2024

AK, 05 SEP 2024 to 31 OCT 2024