

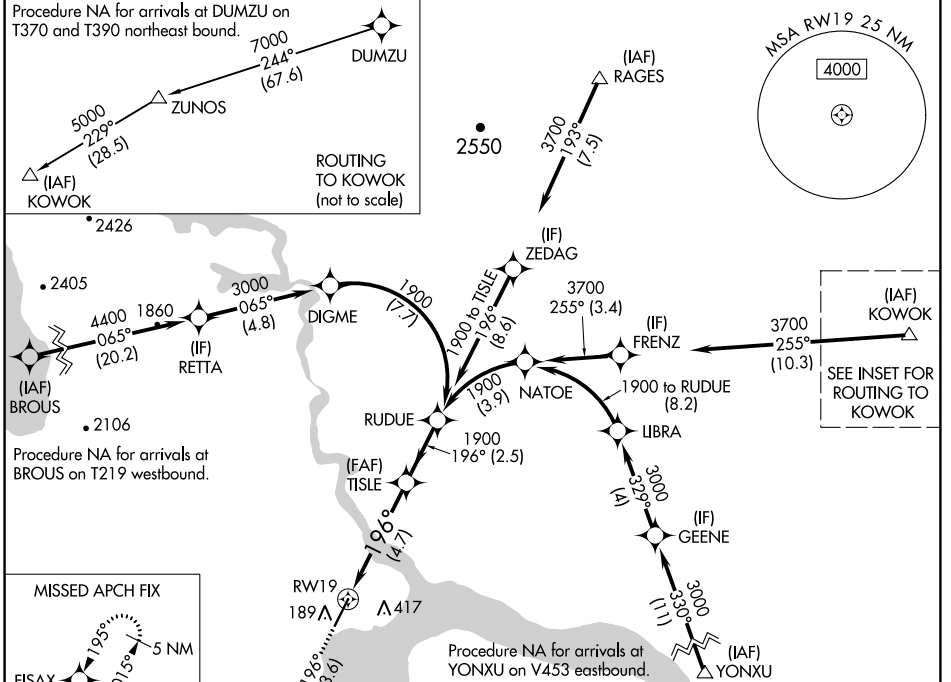
APP CRS	Rwy Idg	6400
196°	TDZE	81
	Apt Elev	82

RNAV (RNP) Y RWY 19

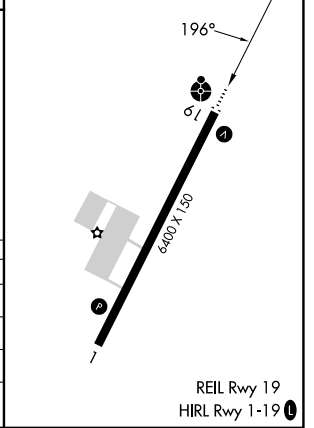
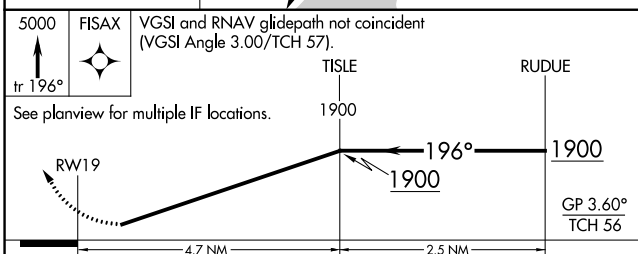
DILLINGHAM (DLG)(PADL)

RNP AR APCH - GPS.	ODALS	MISSED APPROACH: Climb to 5000 on track 196° to FISAX and hold, continue climb-in-hold to 5000.
<p>▼ For uncompensated Baro-VNAV systems, procedure NA below -25°C or above 54°C. Inop table does not apply to RNP 0.10 and RNP 0.30. For inop ALS, increase RNP 0.20 Cat A and B visibility to 1½ SM.</p>		

AFIS 125.0	ANCHORAGE CENTER 132.75 282.35	DILLINGHAM RADIO 123.6 (CTAF) 0
----------------------	------------------------------------------	-------------------------------------------



ELEV	82	TDZE	81
------	-----------	------	-----------



CATEGORY	A	B	C	D
RNP 0.10 DA		429-1 348 (400-1)		NA
RNP 0.20 DA		468-1 387 (400-1)		NA
RNP 0.30 DA		596-1½ 515 (600-1½)		NA

AUTHORIZATION REQUIRED

AK, 05 SEP 2024 to 31 OCT 2024

AK, 05 SEP 2024 to 31 OCT 2024