

VOR/DME DLG	APP CRS	Rwy Idg	6400
116.4	010°	TDZE	82
Chan 111		Apt Elev	82

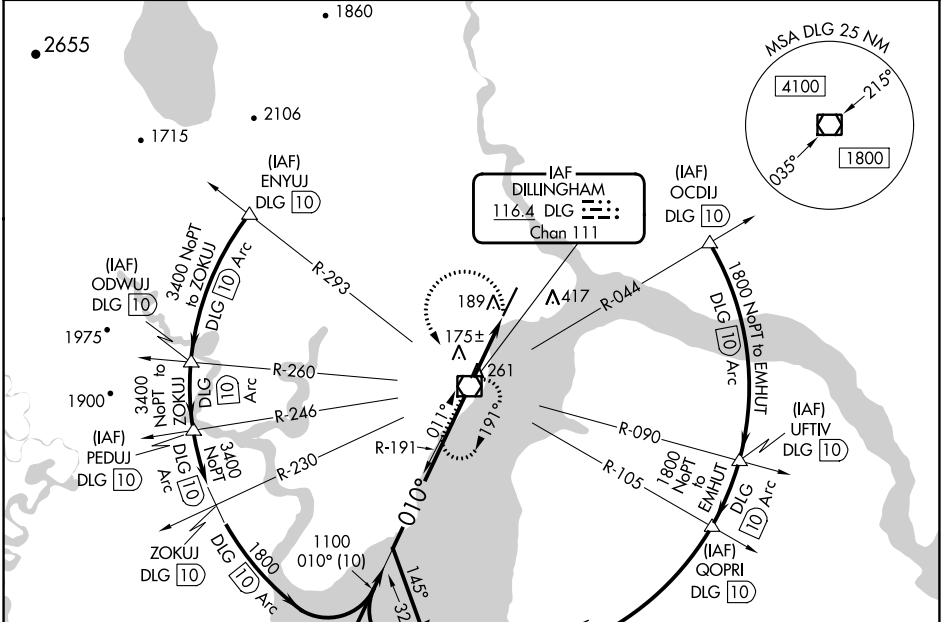
VOR RWY 1

DILLINGHAM (DLG)(PADL)

⚠ Circling NA east of Rwy 1-19. Rwy 1 helicopter visibility reduction below 3/4 SM NA. VDP NA when using Manokotak altimeter setting. When local altimeter setting not received, use Manokotak altimeter setting and increase all MDAs 40 feet.

MISSED APPROACH: Climbing left turn to 2000 direct DLG VOR/DME and hold, continue climb-in-hold to 2000.

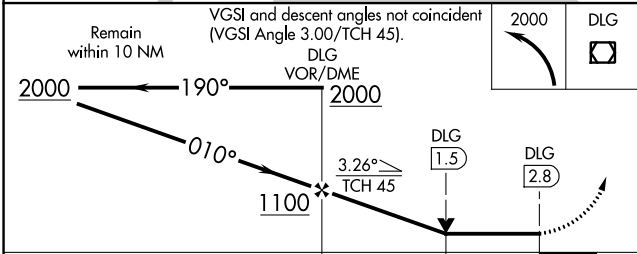
AFIS 125.0	ANCHORAGE CENTER 132.75 282.35	DILLINGHAM RADIO 123.6 (CTAF) Ⓛ
----------------------	--	--



AK, 05 SEP 2024 to 31 OCT 2024

AK, 05 SEP 2024 to 31 OCT 2024

ELEV 82	D	TDZE 82
----------------	----------	----------------



REIL Rwy 19		HIRL Rwy 1-19 Ⓛ	
FAF to MAP 2.8 NM			
Knots	60	90	120 150 180
Min:Sec	2:48	1:52	1:24 1:07 0:56

CATEGORY	A	B	C	D
S-1	540-1 458 (500-1)		540-1 3/8 458 (500-1 3/8)	
C CIRCLING	540-1 458 (500-1)		700-1 3/4 618 (700-1 3/4)	700-2 618 (700-2)