

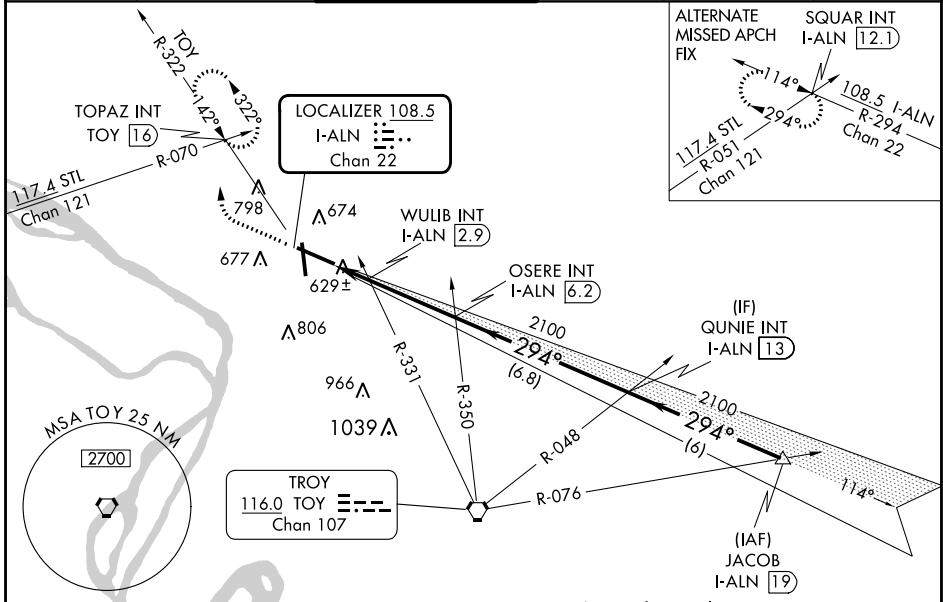
LOC/DME I-ALN 108.5 Chan 22	APP CRS 294°	Rwy Idg TDZE Apt Elev	8099 531 544
---	------------------------	-----------------------------	---

ILS or LOC RWY 29

ST LOUIS RGNL (ALN)

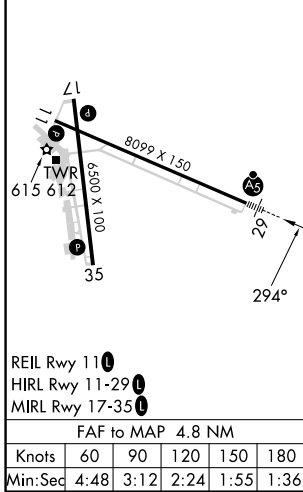
<p>For inop ALS, increase WULIB fix minimums S-LOC 29 Cats C/D visibility to 1 SM.</p>	<p>MALS R</p>	<p>MISSED APPROACH: Climb to 1000 then climbing right turn to 2200 on heading 310° and on TOY VORTAC R-322 to TOPAZ INT/TOY 16 DME and hold.</p>			
			<p>ATIS 128.0</p>	<p>ST LOUIS APP CON 124.2 353.9</p>	<p>REGIONAL TOWER* 126.0 (CTAF) 0 239.0</p>

ATIS 128.0	ST LOUIS APP CON 124.2 353.9	REGIONAL TOWER* 126.0 (CTAF) 0 239.0	GND CON 120.2	CLNC DEL 120.2 (when tower closed)	UNICOM 122.95
-------------------	-------------------------------------	---	----------------------	--	----------------------



ELEV 544	D	TDZE 531
----------	----------	----------

Procedure NA for arrivals at JACOB on V12 northeast bound.



1000	2200	TOY R-322	TOPAZ INT	*LOC only.
↑	hdg 310°			
		OSERE INT I-ALN 6.2	QUINIE INT I-ALN 13	JACOB I-ALN 19
		WULIB INT I-ALN 2.9	2100	2100
		*980	2100	GS 3.00° TCH 55
		1.4 NM	3.3 NM	6.8 NM
		6 NM		
CATEGORY	A	B	C	D
S-ILS 29	731-½ 200 (200-½)			
S-LOC 29	980-½	449 (500-½)	980-¾	449 (500-¾)
CIRCLING	1000-1	456 (500-1)	1160-1¾	1200-2
			616 (700-1¾)	656 (700-2)
WULIB FIX MINIMUMS (DUAL VOR RECEIVERS OR DME REQUIRED)				
S-LOC 29	880-½	349 (400-½)	880-⅝	349 (400-⅝)
CIRCLING	1000-1	456 (500-1)	1160-1¾	1200-2
			616 (700-1¾)	656 (700-2)

EC-3, 03 OCT 2024 to 31 OCT 2024

EC-3, 03 OCT 2024 to 31 OCT 2024