

WAAS CH <b>62821</b> <b>W10A</b>	APP CRS <b>101°</b>	Rwy Idg TDZE <b>1237</b> Apt Elev <b>1253</b>
--	------------------------	---

# RNAV (GPS) RWY 10

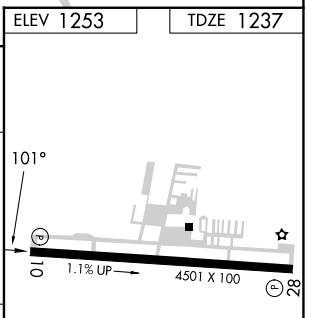
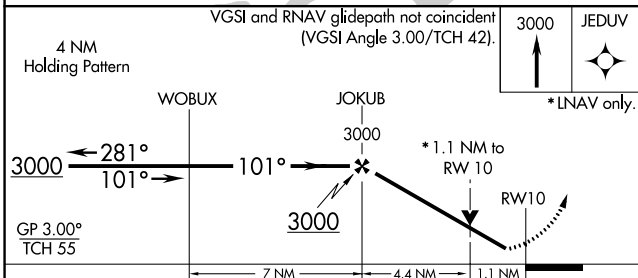
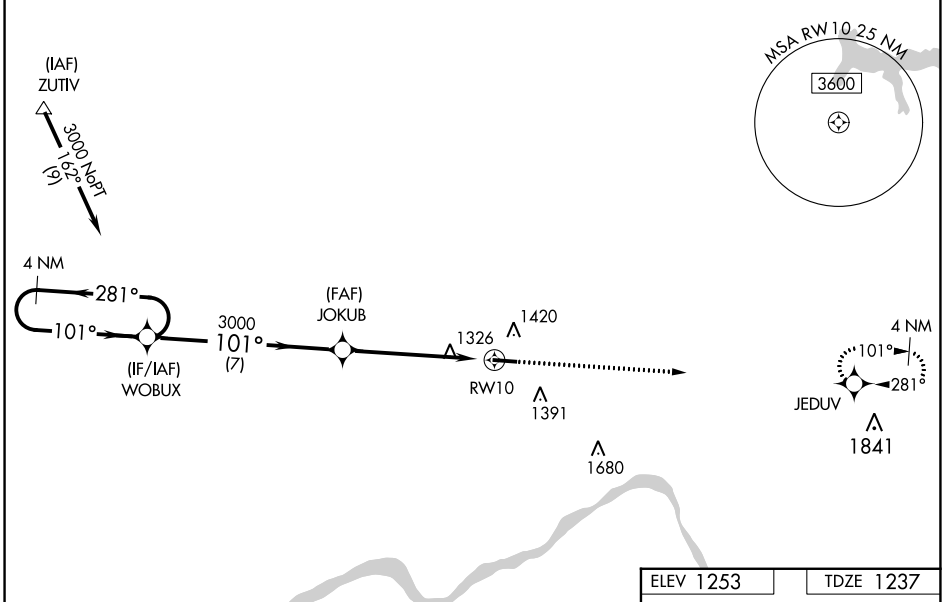
BEAVER COUNTY (BVI)

RNP APCH.

▼ Baro-VNAV and VDP NA when using Pittsburgh Intl altimeter setting. For uncompensated Baro-VNAV systems, LNAV/VNAV NA below -17°C (2°F) or above 36°C (96°F). When local altimeter setting not received, use Pittsburgh Intl altimeter setting; increase all DA 50 feet; increase all MDAs 60 feet and visibility LNAV Cats C and D ½ SM. Circling Rwy 28 NA at night. Rwy 10 helicopter visibility reduction below ¾ SM NA.

MISSED APPROACH: Climb to 3000 direct JEDUV and hold.

ATIS <b>118.35</b>	PITTSBURGH APP CON <b>124.75 338.2</b>	BEAVER COUNTY TOWER* <b>120.3 (CTAF) 0</b>	GND CON <b>121.8</b>	CLNC DEL <b>124.85</b> (when twr closed)
-----------------------	---	---	-------------------------	--



CATEGORY	A	B	C	D
LPV DA		1528-1	290 (300-1)	
LNAV/VNAV DA		1514-1	276 (300-1)	
LNAV MDA		1580-1	342 (400-1)	
CIRCLING	1720-1	467 (500-1)	1720-1½ 467 (500-1½)	1820-2 567 (600-2)

MIRL Rwy 10-28 0  
REIL Rwy 10 and 28 0

NE-4, 03 OCT 2024 to 31 OCT 2024

NE-4, 03 OCT 2024 to 31 OCT 2024