

LOC/DME I-SFZ	APP CRS	Rwy Idg	<b>5000</b>
<b>111.9</b>	<b>047°</b>	TDZE	<b>429</b>
Chan <b>56</b>		Apt Elev	<b>441</b>

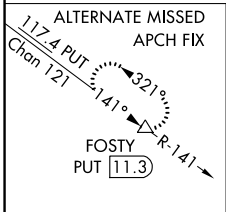
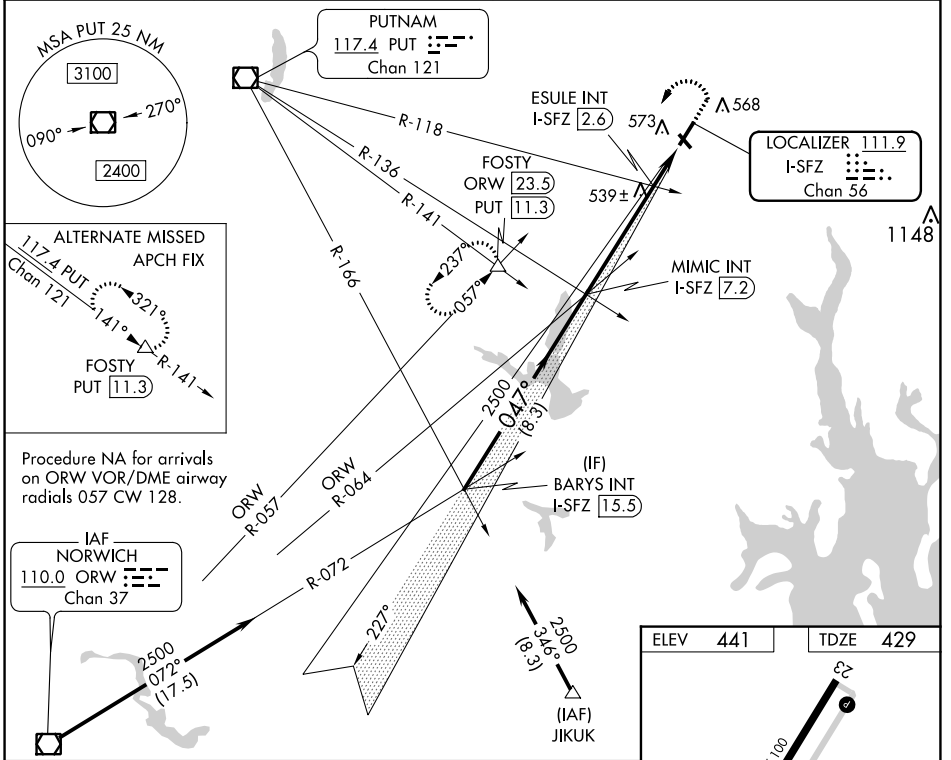
# LOC RWY 5

NORTH CENTRAL STATE (SF/Z)

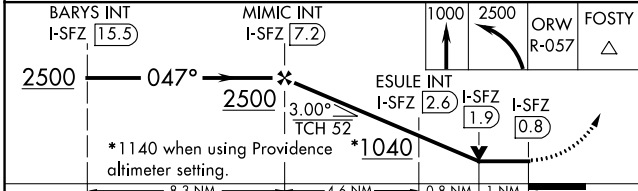
**NA** Circling Rwy 15, 33 NA at night. VDP NA with Providence altimeter setting. When local altimeter setting not received, use Providence altimeter setting and increase all MDA 100 feet; increase S-5 Cat C and Circling Cat C visibility ¼ mile, and ESULE fix minimums S-5 Cat C visibility ¼ mile.

**MALS** MISSED APPROACH: Climb to 1000 then climbing left turn to 2500 on ORW VOR/DME R-057 to FOSTY INT/ ORW 23.5 DME and hold.

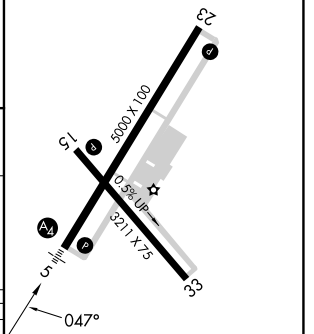
AWOS-3PT <b>120.775</b>	PROVIDENCE APP CON ★ <b>123.675 244.875</b>	CLNC DEL <b>124.35</b>	UNICOM <b>123.075 (CTAF) 0</b>
----------------------------	--	---------------------------	-----------------------------------



Procedure NA for arrivals on ORW VOR/DME airway radials 057 CW 128.



ELEV 441	TDZE 429
----------	----------



CATEGORY	A	B	C	D
S-5	1040-¾ 611 (600-¾)		1040-1½ 611 (600-1½)	NA
<b>C</b> CIRCLING	1040-1 599 (600-1)		1040-1¾ 599 (600-1¾)	NA
ESULE FIX MINIMUMS (DUAL VOR RECEIVERS OR DME REQUIRED)				
S-5	800-¾ 371 (400-¾)		800-⅞ 371 (400-⅞)	NA
<b>C</b> CIRCLING	900-1 459 (500-1)		900-1½ 459 (500-1½)	NA

FAF to MAP 6.4 NM					
Knots	60	90	120	150	180
Min:Sec	6:24	4:16	3:12	2:34	2:08

NE-1, 03 OCT 2024 to 31 OCT 2024

NE-1, 03 OCT 2024 to 31 OCT 2024