

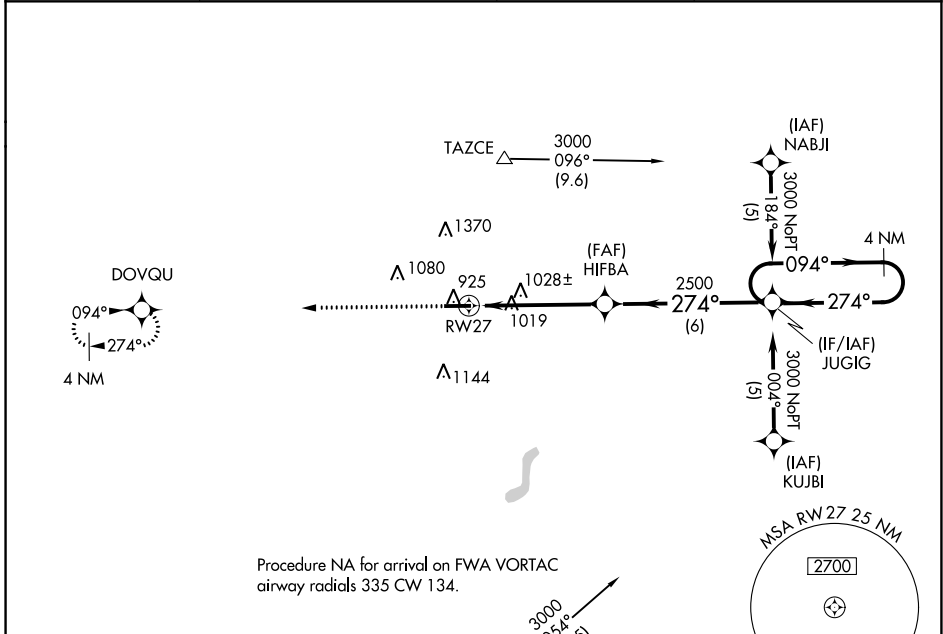
WAAS CH 86401 W27A	APP CRS 274°	Rwy Idg TDZE 880 Apt Elev 880
--	------------------------	---

RNAV (GPS) RWY 27

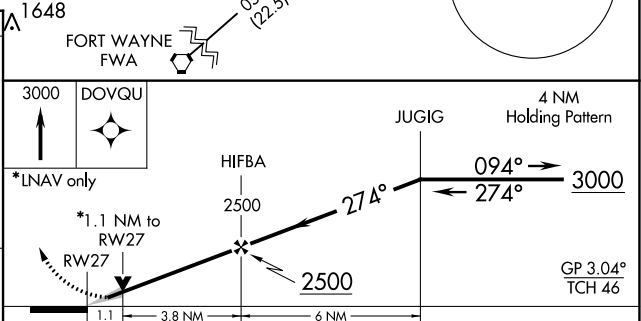
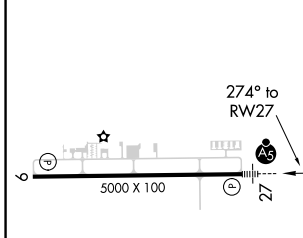
DE KALB COUNTY (GWB)

For uncompensated Baro-VNAV systems, LNAV/VNAV NA below -16°C (4°F) or above 54°C (130°F). DME/DME RNP-0.3 NA.	MALSR	MISSED APPROACH: Climb to 3000 direct DOVQU and hold.

AWOS-3 124.15	FORT WAYNE APP CON 127.2 284.6	CLNC DEL 126.6	UNICOM 123.0 (CTAF)
-------------------------	--	--------------------------	-------------------------------



ELEV 880	TDZE 880
----------	----------



CATEGORY	A	B	C	D
LPV DA	1130-1/2 250 (300-1/2)			
LNAV/VNAV DA	1207-5/8 327 (400-5/8)			
LNAV MDA	1280-1/2 400 (400-1/2)	1280-3/4 400 (400-3/4)		
CIRCLING	1320-1 440 (500-1)	1560-1 680 (700-1)	1720-2 1/2 840 (900-2 1/2)	1720-2 3/4 840 (900-2 3/4)

AUBURN, INDIANA
Orig-D 27APR17

41°18'N-85°04'W

RNAV (GPS) RWY 27

EC-2, 03 OCT 2024 to 31 OCT 2024

EC-2, 03 OCT 2024 to 31 OCT 2024