

| | | | |
|-------------------------|------------------------|-----------------------------|-------------|
| WAAS CH 86499 | APP CRS 132° | Rwy Idg TDZE 1002 | 6000 |
| W13A | | Apt Elev 1002 | |

RNAV (GPS) RWY 13

DEL RIO INTL (DRT)

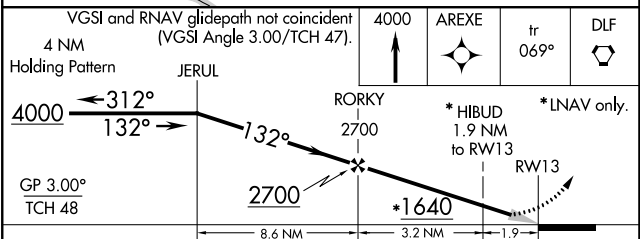
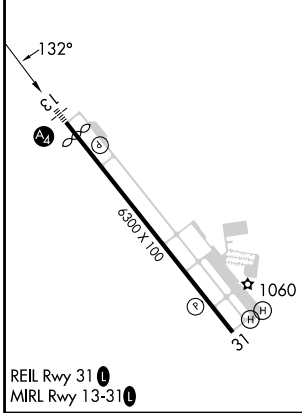
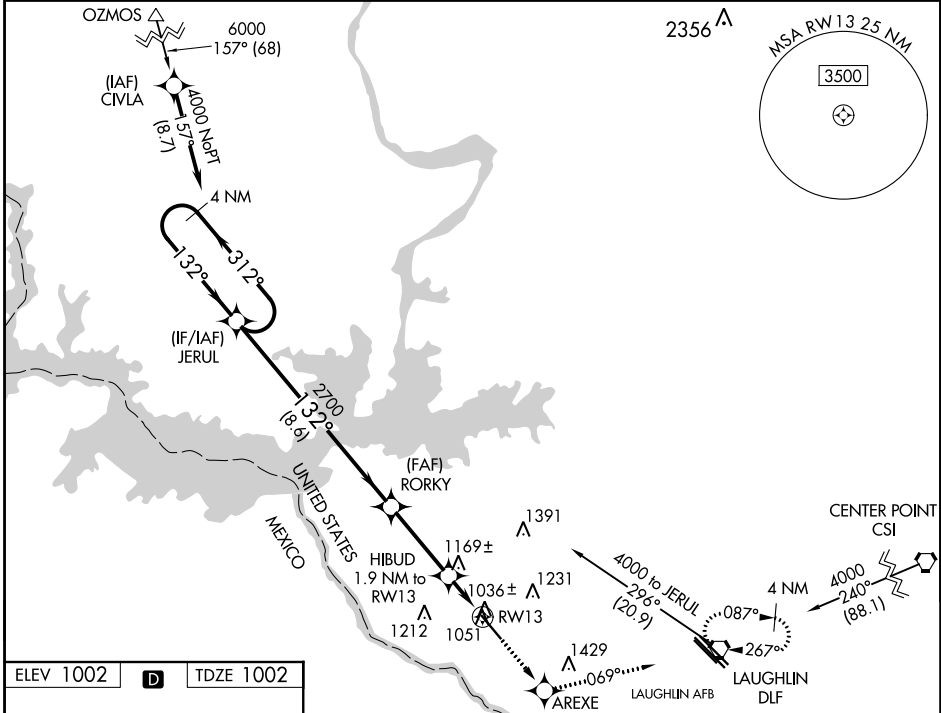
RNP APCH.

MAIS

MISSED APPROACH: Climb to 4000 direct AREXE and on 069° track to DLF VORTAC and hold, continue climb-in-hold to 4000.

⚠️ Circling NA for Cat D southwest of Rwy 13-31. When local altimeter setting not received, use Laughlin AFB altimeter setting and increase all DA 30 feet and all MDA 40 feet, increase LPV visibility all Cats, LNAV Cats C and D and Circling Cats C and D visibility 1/4 SM. Baro-VNAV NA when using Laughlin AFB altimeter setting. For uncompensated Baro-VNAV systems, LNAV/VNAV NA below -17° C (2°F) or above 47°C (116°F).

| | | | |
|------------------------|---|--------------------------|-------------------------------|
| ASOS 118.525 | DEL RIO APP CON * 119.6 259.1 | CLNC DEL 120.5 | UNICOM 122.8 (CTAF) |
|------------------------|---|--------------------------|-------------------------------|



| CATEGORY | A | B | C | D |
|--------------|------------------------|--------------------|------------------------|----------------------------|
| LPV DA | | 1252-3/4 | 250 (300-3/4) | |
| LNAV/VNAV DA | | 1401-1 | 399 (400-1) | |
| LNAV MDA | 1500-1/2 498 (500-1/2) | | 1500-3/4 498 (500-3/4) | 1500-1 498 (500-1) |
| CIRCLING | 1500-1 498 (500-1) | 1560-1 558 (600-1) | 1740-2 738 (800-2) | 1740-2 1/4 738 (800-2 1/4) |

SC-3, 03 OCT 2024 to 31 OCT 2024

SC-3, 03 OCT 2024 to 31 OCT 2024