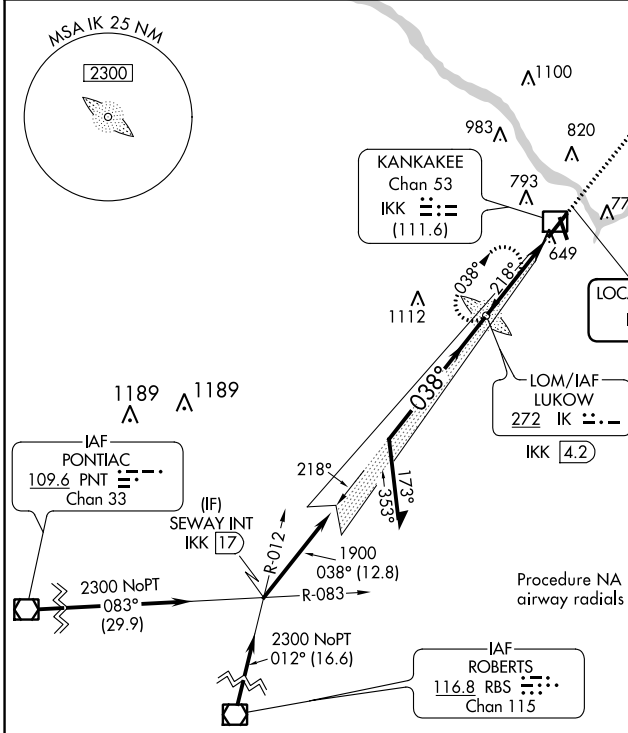


LOC I- IKK 108.7	APP CRS 038°	Rwy ldg TDZE Apt Elev	5981 624 630
-----------------------------------	------------------------	-----------------------------	---

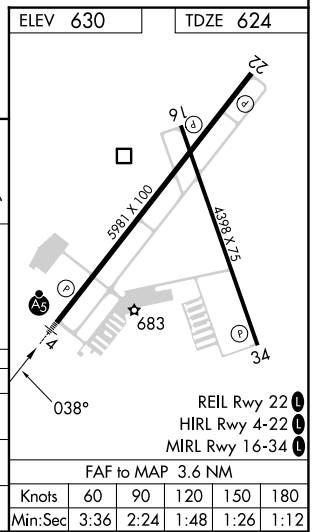
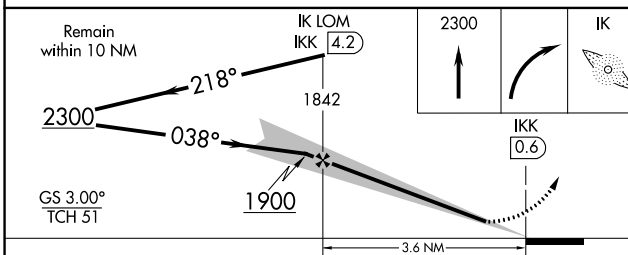
ILS or LOC RWY 4

GREATER KANKAKEE (IKK)

ADF required.		MALSR	MISSED APPROACH: Climb to 2300 then right turn direct LUKOW LOM and hold.
<p>⚠ Circling to Rwy 16, 34 NA at night. For inop ALS, increase S-LOC 4 Cat C/D visibility to ¾ SM.</p>			
AWOS-3 128.475	CHICAGO CENTER 132.5 284.7	UNICOM 123.0 (CTAF) 0	



Procedure NA for arrival on RBS VOR/DME airway radials 351 CW 055.



CATEGORY	A	B	C	D
S-ILS 4	824-½ 200 (200-½)			
S-LOC 4	920-½ 296 (300-½)	920-¾ 296 (300-¾)		
CIRCLING	1080-1 450 (500-1)	1100-1 470 (500-1)	1140-1½ 510 (600-1½)	1340-2¼ 710 (800-2¼)

FAF to MAP 3.6 NM					
Knots	60	90	120	150	180
Min:Sec	3:36	2:24	1:48	1:26	1:12

EC-3, 03 OCT 2024 to 31 OCT 2024

EC-3, 03 OCT 2024 to 31 OCT 2024