

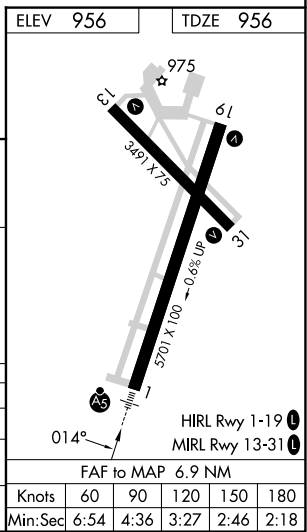
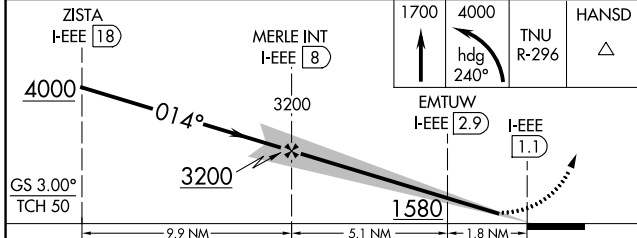
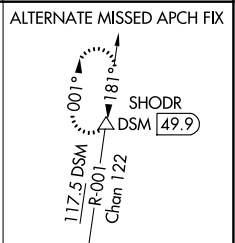
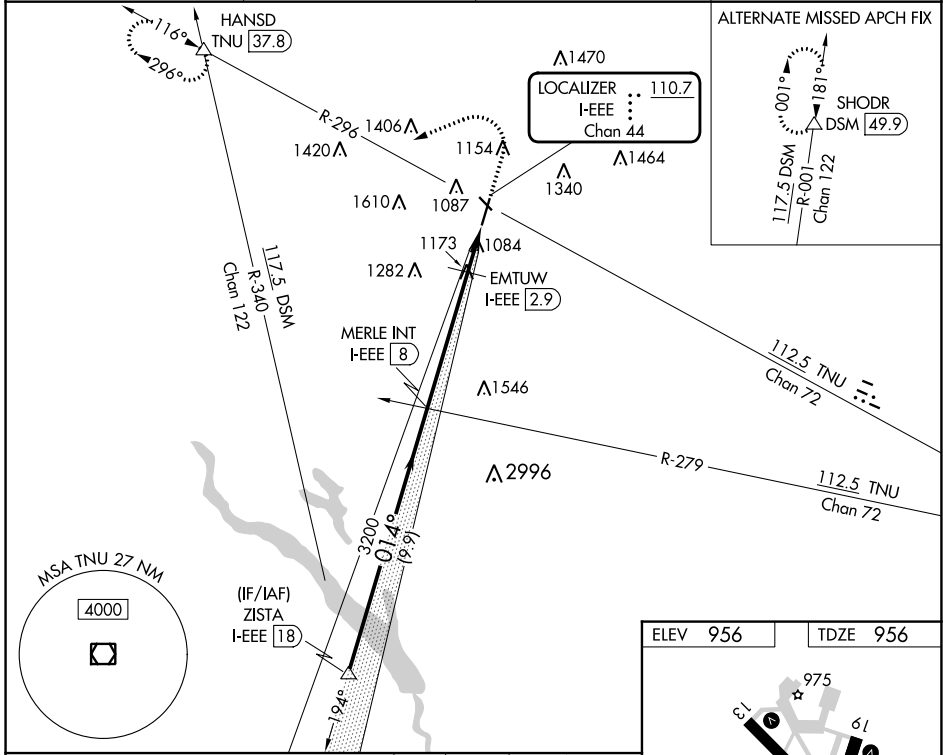
LOC/DME I-EEE 110.7 Chan 44	APP CRS 014°	Rwy Idg 5701 TDZE 956 Apt Elev 956
---	------------------------	---

ILS or LOC RWY 1

AMES MUNI (AMW)

DME required.	MALSR	MISSED APPROACH: Climb to 1700 then climbing left turn to 4000 on heading 240° and TNU VOR/DME R-296 to HANSD INT/37.8 DME and hold, continue climb-in-hold to 4000.
<p>NA For inop ALS increase S-LOC 1 Cat C/D visibility to 1 3/8 SM.</p> <p>-27°C</p>		

ASOS 132.025	DES MOINES APP CON 123.9 307.15	CLNC DEL 126.0	UNICOM 122.7 (CTAF)
------------------------	---	--------------------------	-------------------------------



CATEGORY	A	B	C	D
S-ILS 1	1206-1/2		250 (300-1/2)	
S-LOC 1	1440-1/2 484 (500-1/2)		1440-1 484 (500-1)	
CIRCLING	1440-1 484 (500-1)	1460-1 504 (600-1)	1640-2 684 (700-2)	1960-3 1004 (1100-3)

NC-3, 03 OCT 2024 to 31 OCT 2024

NC-3, 03 OCT 2024 to 31 OCT 2024