

WAAS CH 78129 W24A	APP CRS 245°	Rwy Idg TDZE 326 Apt Elev 331	4897
--	------------------------	--	-------------

RNAV (GPS) Y RWY 24

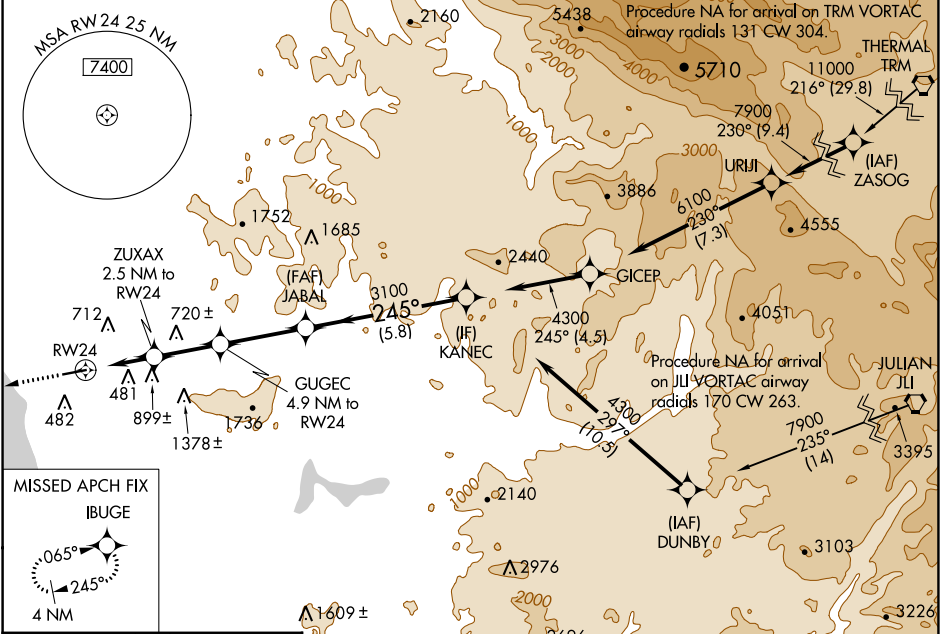
MC CLELLAN-PALOMAR (CRQ)

⚠ For uncompensated Baro-VNAV systems, LNAV/VNAV NA below -4°C (25°F) or above 54°C (130°F). DME/DME RNP-0.3 NA. Rwy 24 helicopter visibility reduction below RVR 4000 NA. For inop ALS, increase LNAV/VNAV all Cats visibility to 1% SM, increase LNAV Cats A/B visibility to RVR 5500 Cat C to 1% SM. Inop table does not apply to LPV.



MISSED APPROACH:
Climb to 2000 direct
IBUGE and hold.

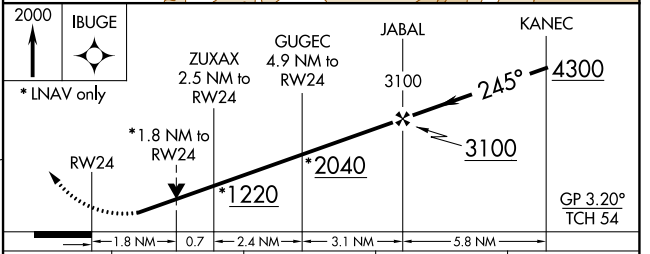
ATIS 120.15	SOCAL APP CON 127.3 323.0	PALOMAR TOWER* 118.6 (CTAF) 0 276.4	GND CON 121.8	CLNC DEL 134.85
-----------------------	-------------------------------------	--	-------------------------	---------------------------



SW-3, 03 OCT 2024 to 31 OCT 2024

SW-3, 03 OCT 2024 to 31 OCT 2024

ELEV 331 **D** TDZE 326



CATEGORY	A	B	C	D
LPV DA	528/40	202 (200-3/4)	576/40 250 (300-3/4)	NA
LNAV/VNAV DA	927-1½ 601 (600-1½)			NA
LNAV MDA	1000/40	674 (700-3/4)	1000-1½ 674 (700-1½)	NA
C CIRCLING	1000-1 669 (700-1)	1020-1 689 (700-1)	1260-2¾ 929 (1000-2¾)	NA