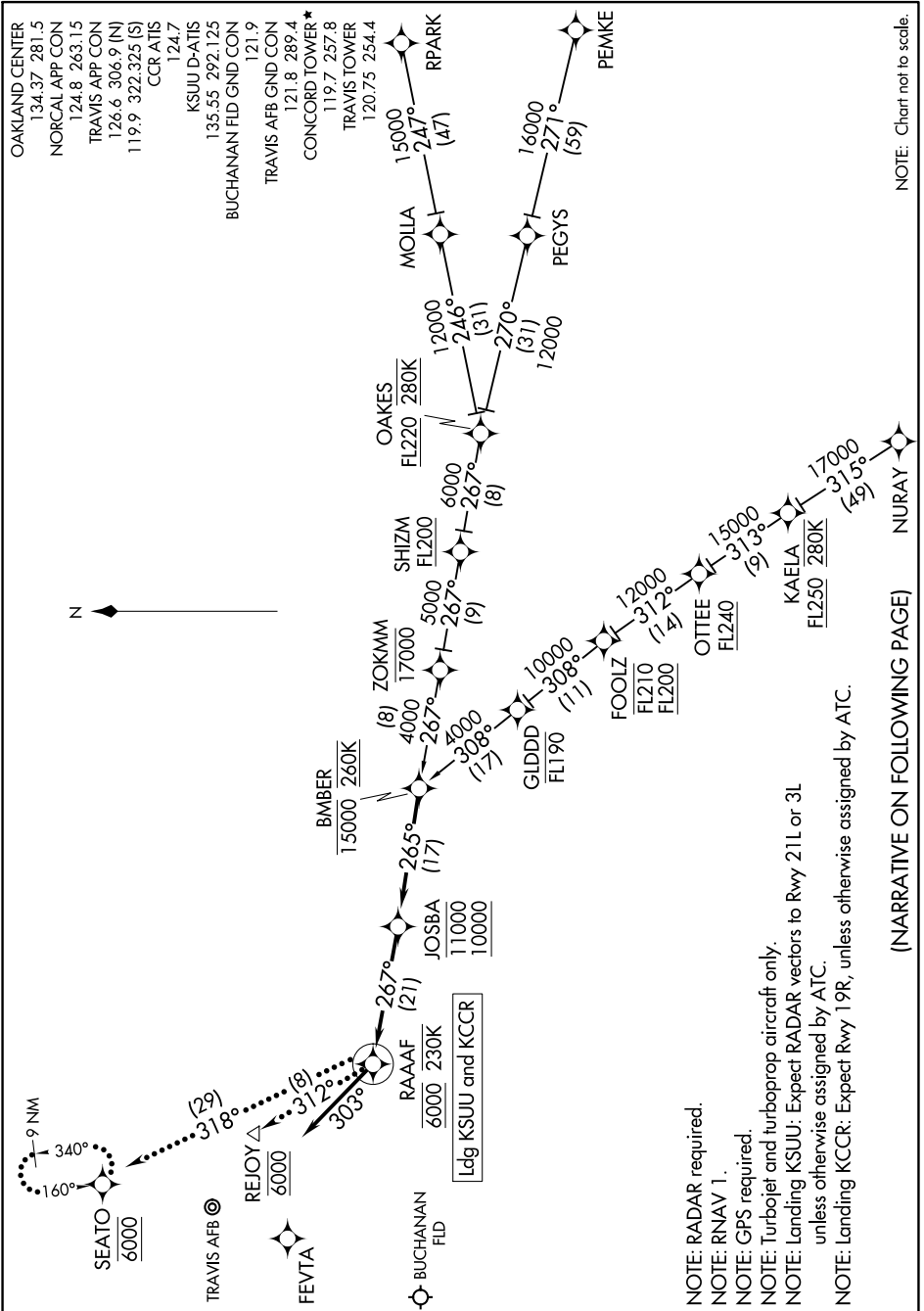


BMBER ONE ARRIVAL (RNAV)

AL-5320 (FAA)

CONCORD, CALIFORNIA

SW-2, 03 OCT 2024 to 31 OCT 2024



NOTE: Chart not to scale.

(NARRATIVE ON FOLLOWING PAGE)

SW-2, 03 OCT 2024 to 31 OCT 2024

BMBER ONE ARRIVAL (RNAV)

CONCORD, CALIFORNIA

- NOTE: RADAR required.
- NOTE: RNAV 1.
- NOTE: GPS required.
- NOTE: Turbojet and turboprop aircraft only.
- NOTE: Landing KSUU: Expect RADAR vectors to Rwy 21L or 3L unless otherwise assigned by ATC.
- NOTE: Landing KCCR: Expect Rwy 19R, unless otherwise assigned by ATC.

Ldg KSUU and KCCR