

WAAS CH 99724 W06A	APP CRS 059°	Rwy Idg TDZE Apt Elev	2598 670 670
----------------------------------------	------------------------	-----------------------------	-----------------------------------------

RNAV (GPS) RWY 6

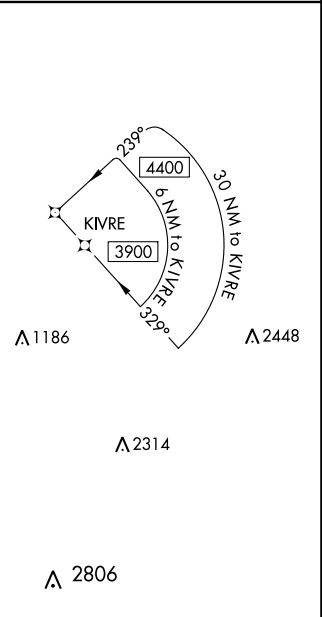
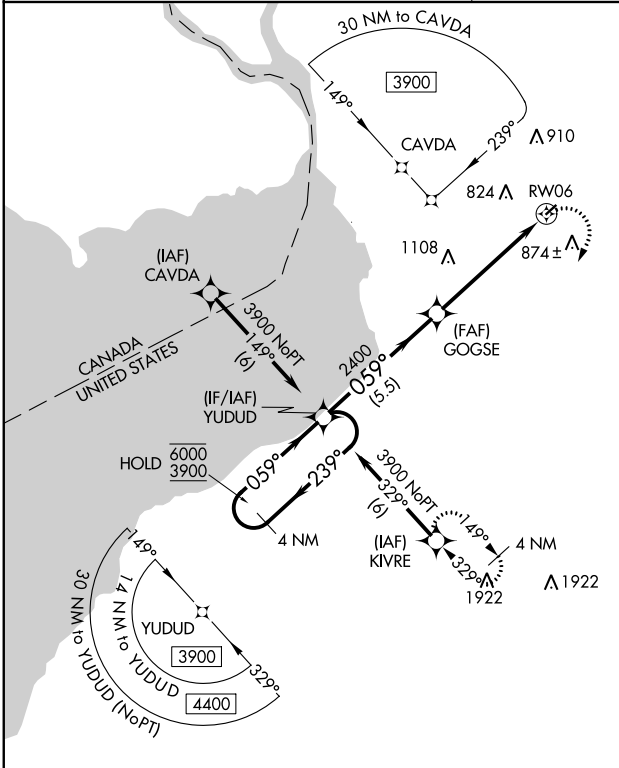
BUFFALO AIRFIELD (9G~~0~~)

RNP APCH.

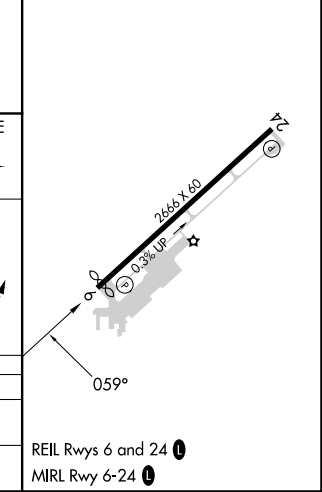
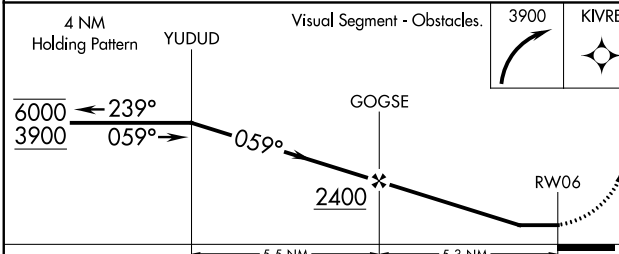
Procedure NA at night. Rwy 6 helicopter visibility reduction below 1 SM NA.
Use Buffalo Niagara Intl altimeter setting.

MISSED APPROACH: Climbing right turn to 3900 direct KIVRE and hold, continue climb in hold to 3900.

BUFFALO APP CON 126.15 263.125	UNICOM 122.975 (CTAF) 0
------------------------------------------	-----------------------------------



ELEV 670	TDZE 670
----------	----------



CATEGORY	A	B	C	D
LP MDA	1180-1	510 (600-1)		NA
LNAV MDA	1180-1	510 (600-1)		NA

REIL Rwy 6 and 24 0

MIRL Rwy 6-24 0

BUFFALO AIRFIELD (9G~~0~~)

RNAV (GPS) RWY 6

NE-2, 03 OCT 2024 to 31 OCT 2024

NE-2, 03 OCT 2024 to 31 OCT 2024