

APP CRS	Rwy Idg	6376
190°	TDZE	1182
	Apt Elev	1182

RNAV (GPS) RWY 19

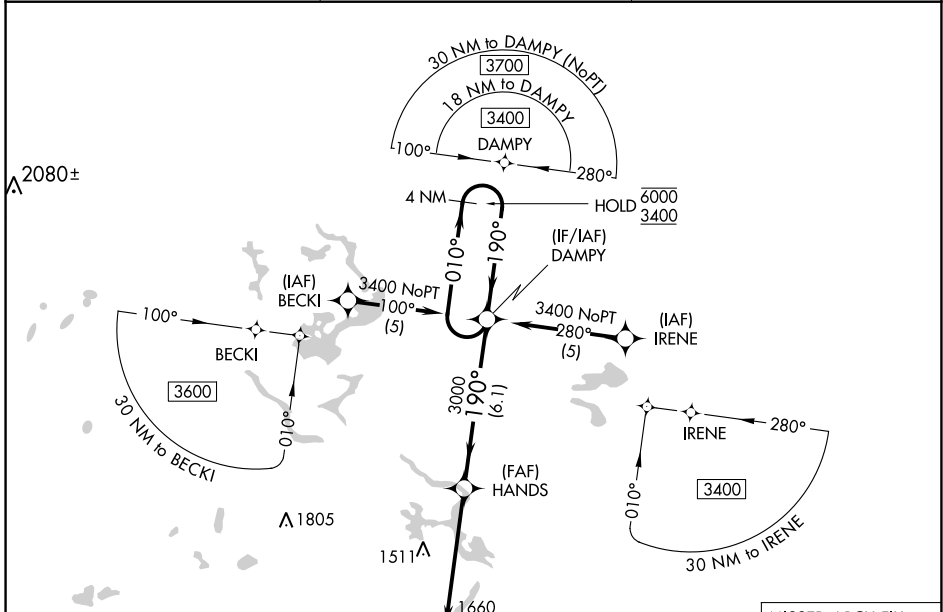
FORD (IMT)

RNP APCH-GPS.

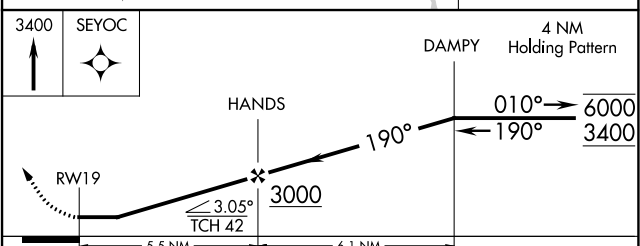
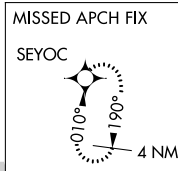
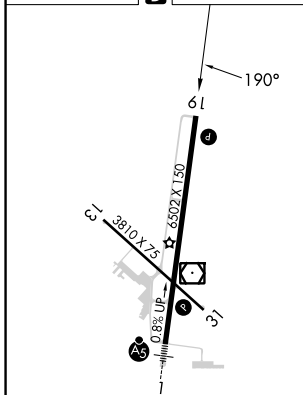
▼ Circling NA northeast of Rwy 19 and 31. Rwy 19 helicopter visibility reduction below 1 SM NA.
 ▲ Straight-in Rwy 19 NA at night, Circling Rwy 13, 19, 31 NA at night.

MISSED APPROACH:
 Climb to 3400 direct
 SEYOC and hold.

ASOS 119.025	MINNEAPOLIS CENTER 121.25 322.5	UNICOM 122.8 (CTAF) 0
------------------------	---	---------------------------------



ELEV	1182	D	TDZE	1182
------	------	---	------	------



CATEGORY	A	B	C	D
LNAV MDA	1760-1	578 (600-1)	1760-1½	578 (600-1½)
C CIRCLING	1760-1 578 (600-1)	1780-1 598 (600-1)	1780-1½ 598 (600-1½)	1840-2 658 (700-2)

MIRL Rwy 13-31 0
 HIRL Rwy 1-19 0
 REL Rwy 19 and 31 0

EC-1, 03 OCT 2024 to 31 OCT 2024

EC-1, 03 OCT 2024 to 31 OCT 2024