

VOR/DME IMT 111.2 Chan 49	APP CRS 323°	Rwy Idg 3810 TDZE 1131 Apt Elev 1182
---	------------------------	---

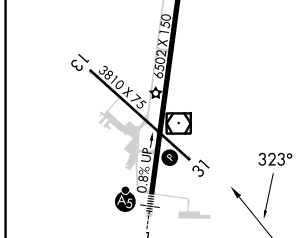
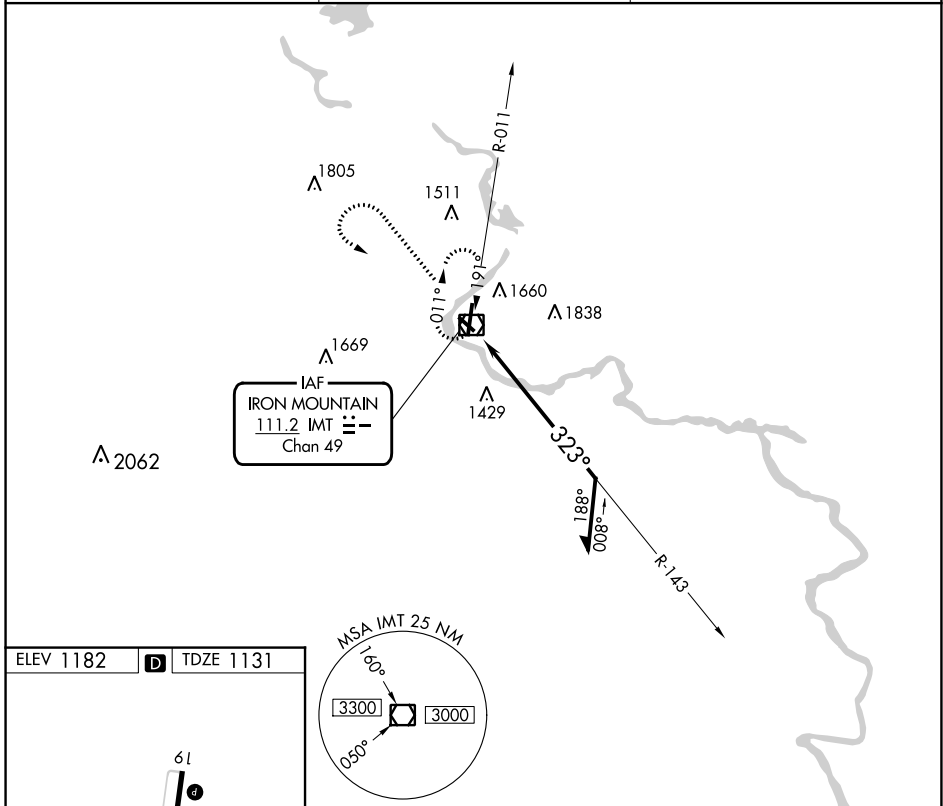
VOR RWY 31

FORD (IMT)

▼ Circling NA northeast of Rwy 19 and 31. Rwy 31 helicopter visibility reduction below 1 SM NA.
▲ Straight-in Rwy 31 NA at night, Circling Rwy 13, 31 NA at night.

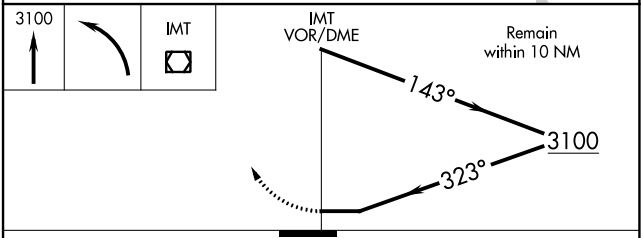
MISSED APPROACH: Climb to 3100 then left turn direct IMT VOR/DME and hold.

ASOS 119.025	MINNEAPOLIS CENTER 121.25 322.5	UNICOM 122.8 (CTAF) 1
------------------------	---	--



ELEV 1182 **D** TDZE 1131

MIRL Rwy 13-31 **1**
 HIRL Rwy 1-19 **1**
 REL Rwys 19 and 31 **1**



CATEGORY	A	B	C	D
S-31	1760-1	629 (600-1)	1760-1¾ 629 (600-1¾)	1760-2 629 (600-2)
C CIRCLING	1760-1 578 (600-1)	1780-1 598 (600-1)	1780-1¾ 598 (600-1¾)	1840-2 658 (700-2)

EC-1, 03 OCT 2024 to 31 OCT 2024

EC-1, 03 OCT 2024 to 31 OCT 2024