

(LIFRR2.LIFRR) 24137

AL-5349 (FAA)

MIAMI EXEC (TMB)  
MIAMI, FLORIDA

# LIFRR TWO DEPARTURE (RNAV)

**TOP ALTITUDE:  
ASSIGNED BY ATC**

RNAV 1 - DME/DME/IRU or GPS.

RADAR required for non-GPS  
equipped aircraft.

NOTE: Accelerate to 250K until leaving 10000,  
if unable, advise ATC.

NOTE: Jet aircraft only.

NOTE: For aircraft filed at or below 12000.

### TAKEOFF MINIMUMS

Rwy 9L: Standard with minimum climb of 500'  
per NM to 1300.

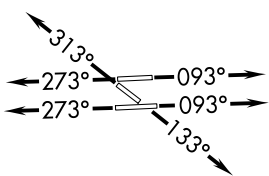
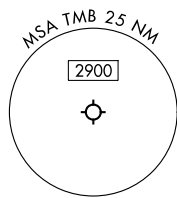
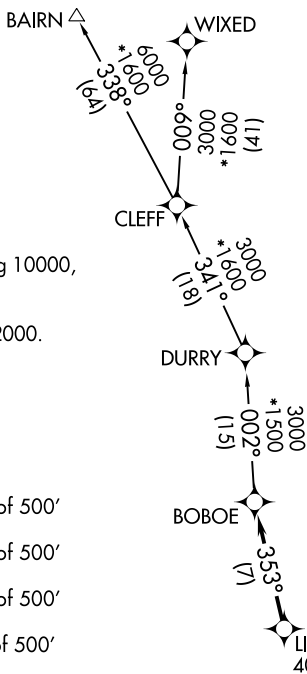
Rwy 9R: Standard with minimum climb of 500'  
per NM to 1500.

Rwy 13: Standard with minimum climb of 500'  
per NM to 1800.

Rwy 27L: Standard with minimum climb of 500'  
per NM to 1900.

Rwy 27R: Standard with minimum climb of 500'  
per NM to 1700.

Rwy 31: Standard with minimum climb of 500'  
per NM to 1400.



MIAMI DEP CON 125.5 354.1  
 ATIS 124.0  
 CLNC DEL 133.0  
 GND CON 121.7  
 MIAMI EXEC TOWER\* 118.9 (CTAF)

NOTE: Chart not to scale.

### DEPARTURE ROUTE DESCRIPTION

TAKEOFF RUNWAYS 9L/R: Climb on heading 093° or as assigned by ATC, thence. . .

TAKEOFF RUNWAY 13: Climb on heading 133° or as assigned by ATC, thence. . .

TAKEOFF RUNWAYS 27L/R: Climb on heading 273° or as assigned by ATC, thence. . .

TAKEOFF RUNWAY 31: Climb on heading 313° or as assigned by ATC, thence. . .

. . .for RADAR vector to cross LIFRR at or above 4000, then on track 353° to BOBOE, then on assigned transition, maintain ATC assigned altitude, expect clearance to filed altitude within 10 minutes after departure.

BAIRN TRANSITION (LIFRR2.BAIRN)  
WIXED TRANSITION (LIFRR2.WIXED)

# LIFRR TWO DEPARTURE (RNAV)

(LIFRR2.LIFRR) 21MAR24

MIAMI, FLORIDA  
MIAMI EXEC (TMB)

SE-3, 03 OCT 2024 to 31 OCT 2024

SE-3, 03 OCT 2024 to 31 OCT 2024