


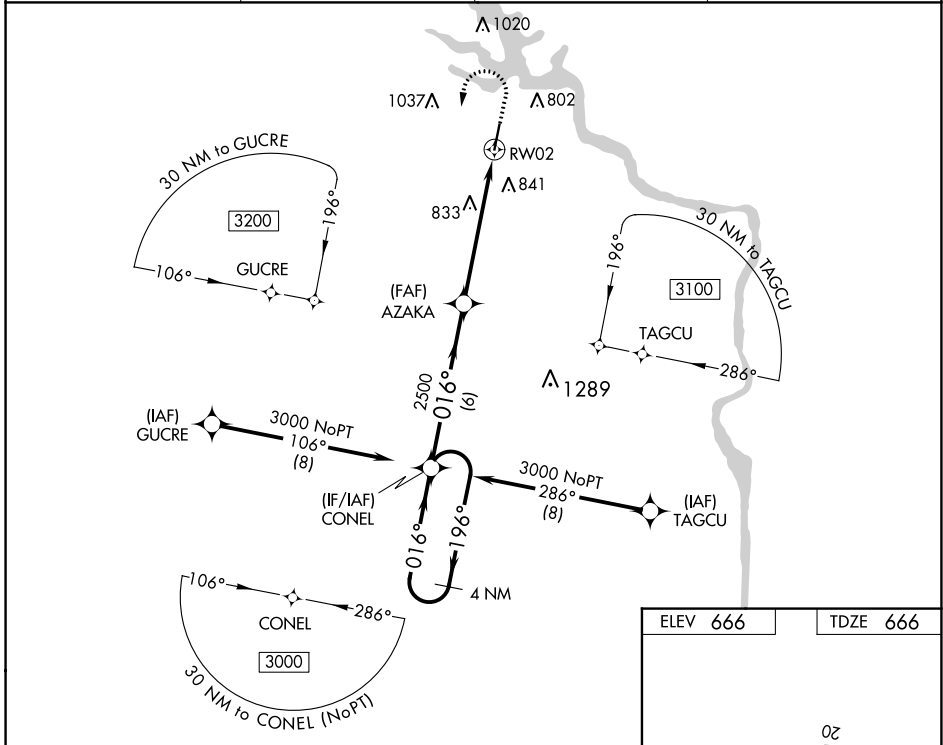
WAAS CH <b>70425</b> <b>W02A</b>	APP CRS <b>016°</b>	Rwy Idg <b>5500</b> TDZE <b>666</b> Apt Elev <b>666</b>
--	------------------------	---

# RNAV (GPS) RWY 2

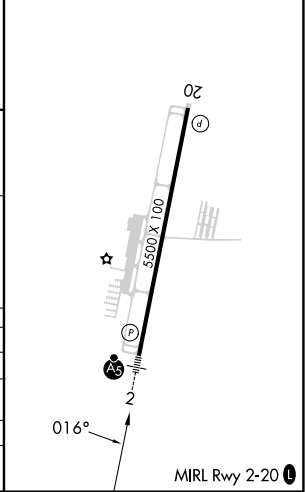
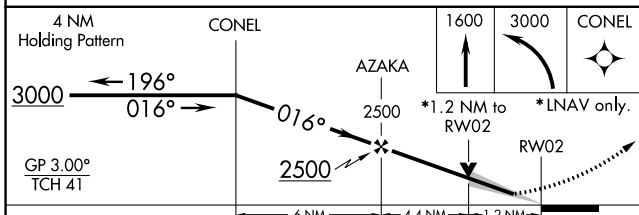
ROCK HILL/YORK COUNTY/BRYANT FLD (UZA)

<p><b>⚠</b> Baro-VNAV and VDP NA when using Charlotte/Douglas Intl altimeter setting. For uncompensated Baro-VNAV systems, LNAV/VNAV NA below -9°C (16°F) or above 54°C (130°F). DME/DME RNP-0.3 NA. When local altimeter setting not received, use Charlotte/Douglas Intl altimeter setting and increase all DA 45 feet and all MDA 60 feet. Increase LNAV/VNAV all Cats visibility 1/8 mile and LNAV Cat C/D visibility 1/4 mile.</p>	<p>MALSR</p> 	<p><b>MISSED APPROACH:</b> Climb to 1600 then climbing left turn to 3000 direct CONEL and hold.</p>
---	--	---

ASOS <b>120.775</b>	CHARLOTTE APP CON <b>120.05 307.8</b>	GCO <b>121.725</b>	UNICOM <b>123.05</b> (CTAF) <b>📻</b>
------------------------	--	-----------------------	---



ELEV 666	TDZE 666
----------	----------



CATEGORY	A	B	C	D
LPV DA		866-1/2	200 (200-1/2)	
LNAV/VNAV DA		1022-3/4	356 (400-3/4)	
LNAV MDA	1100-1/2	434 (500-1/2)	1100-3/4	434 (500-3/4)
<b>📻</b> CIRCLING	1140-1 474 (500-1)	1160-1 494 (500-1)	1340-2 674 (700-2)	1340-2 1/4 674 (700-2 1/4)

SE-2, 03 OCT 2024 to 31 OCT 2024

SE-2, 03 OCT 2024 to 31 OCT 2024