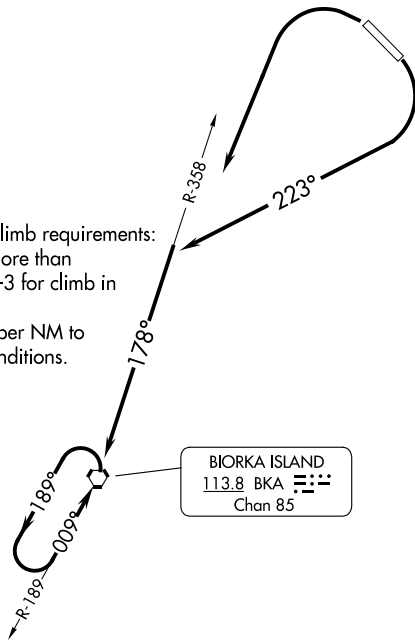


(BKA4.BKA) 23334

# BIORKA FOUR DEPARTURE (OBSTACLE)

SITKA ROCKY GUTIERREZ (SIT) (PASI)  
AL-5414 (FAA) SITKA, ALASKA

AFIS  
135.9  
ANCHORAGE CENTER  
126.1 335.5  
SITKA RADIO  
123.6 (CTAF) 122.2



## TAKEOFF MINIMUMS

- Rwy 11: Standard with the following minimum climb requirements: 180K or less, 410' per NM to 1900; more than 180K, 645' per NM to 3400, or 3900-3 for climb in visual conditions.
- Rwy 29: Standard with minimum climb of 233' per NM to 1000, or 3900-3 for climb in visual conditions.

WARNING: High terrain all quadrants, Mount Edgecumbe 3201', 13 NM southwest of Sitka Airport.

## TAKEOFF OBSTACLE NOTES

- Rwy 11: Trees beginning 1418' from DER, 776' right of centerline, up to 78' AGL/102' MSL.
- Trees beginning 1524' from DER, 576' right of centerline, up to 64' AGL/100' MSL.
- Trees beginning 2001' from DER, 492' right of centerline, up to 89' AGL/115' MSL.
- Trees beginning 2055' from DER, 753' left of centerline, up to 83' AGL/108' MSL.
- Trees beginning 2120' from DER, 548' right of centerline, up to 113' AGL/138' MSL.
- Trees beginning 2210' from DER, 533' right of centerline, up to 110' AGL/135' MSL.
- Trees beginning 3496' from DER, 792' left of centerline, up to 122' AGL/139' MSL.
- Trees beginning 4035' from DER, 774' left of centerline, up to 160' AGL/185' MSL.
- Trees beginning 4203' from DER, 847' left of centerline, up to 123' AGL/153' MSL.
- Trees beginning 4445' from DER, 838' left of centerline, up to 104' AGL/174' MSL.
- Trees beginning 4541' from DER, 529' left of centerline, up to 99' AGL/159' MSL.
- Trees beginning 5139' from DER, 20' right of centerline, up to 161' MSL.
- Tree 6074' from DER, 34' left of centerline, 145' AGL/184' MSL.
- Rwy 29: Tree 124' from DER, 505' right of centerline, 20' AGL/35' MSL.

NOTE: Chart not to scale.

## DEPARTURE ROUTE DESCRIPTION

**TAKEOFF RUNWAY 11:** Climbing right turn heading 223° to intercept BKA R-358 to BKA VORTAC, thence. . . .

**TAKEOFF RUNWAY 29:** Climbing left turn direct BKA VORTAC, thence. . . .

**VCOA ALL RUNWAYS:** Obtain ATC approval for VCOA when requesting IFR clearance. Climb in visual conditions to cross Sitka Rocky Gutierrez Airport at or above 3800 then climb direct BKA VORTAC, thence. . . .

. . . .continue climb in BKA VORTAC holding pattern to cross BKA VORTAC at or above MEA for direction of flight before proceeding on course.

# BIORKA FOUR DEPARTURE (OBSTACLE)

(BKA4.BKA) 01FEB18

SITKA, ALASKA  
SITKA ROCKY GUTIERREZ (SIT) (PASI)

AK, 05 SEP 2024 to 31 OCT 2024

AK, 05 SEP 2024 to 31 OCT 2024