

(STKA9.SSR) 23334

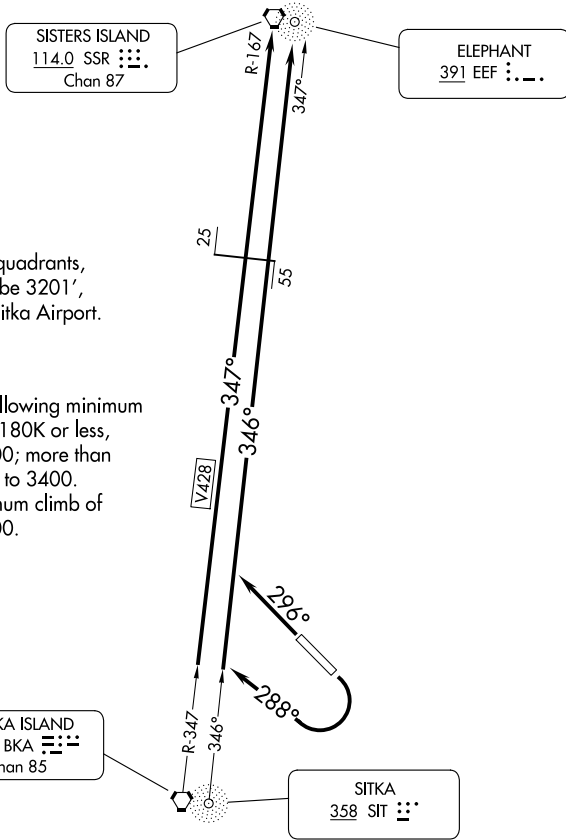
SITKA NINE DEPARTURE

AL-5414 (FAA)

SITKA ROCKY GUTIERREZ (SIT) (PASI)

SITKA, ALASKA

AFIS
135.9
ANCHORAGE CENTER
126.1 335.5
SITKA RADIO
123.6 (CTAF) 122.2
UNICOM
122.95



WARNING: High terrain all quadrants,
Mount Edgecumbe 3201',
13 NM SW of Sitka Airport.

TAKEOFF MINIMUMS

- Rwy 11: Standard with the following minimum climb requirements: 180K or less, 390' per NM to 4500; more than 180K, 645' per NM to 3400.
- Rwy 29: Standard with minimum climb of 357' per NM to 5400.

AK, 05 SEP 2024 to 31 OCT 2024

AK, 05 SEP 2024 to 31 OCT 2024

NOTE: Chart not to scale.



DEPARTURE ROUTE DESCRIPTION

TAKEOFF RUNWAY 11: Climbing right turn heading 288° to join V428 and SSR R-167 to SSR VORTAC or on SIT 346° bearing and EEF 347° course to EEF NDB.

TAKEOFF RUNWAY 29: Climb heading 296° to join V428 to SSR VORTAC or SIT NDB 346° bearing and EEF 347° course to EEF NDB.

SITKA NINE DEPARTURE
(STKA9.SSR) 13NOV14

SITKA, ALASKA
SITKA ROCKY GUTIERREZ (SIT) (PASI)