

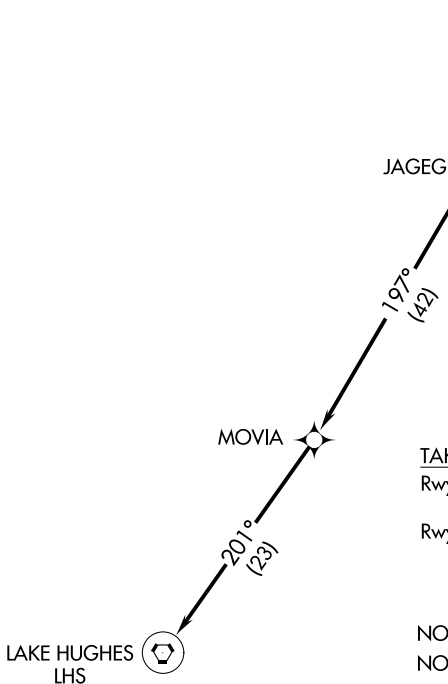
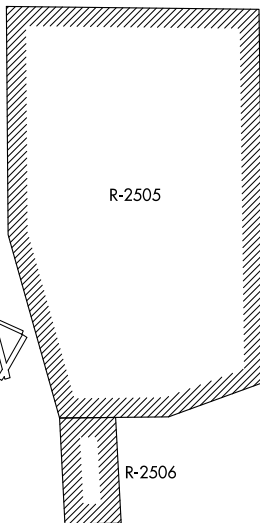
(LHS2.LHS) 23278

AL-5417 (FAA)

# LAKE HUGHES TWO DEPARTURE (OBSTACLE) (RNAV)

INYOKERN (IYK)  
INYOKERN, CALIFORNIA

JOSHUA DEP CON  
133.65 348.7



### TAKEOFF MINIMUMS

Rwy 20: Standard with a minimum climb of 240' per NM to 7000.  
Rwys 2, 15, 33, 10, 28: NA-restricted airspace.

NOTE: GPS required.  
NOTE: RNAV 1.

NOTE: Chart not to scale.

### DEPARTURE ROUTE DESCRIPTION

TAKEOFF RUNWAY 20: Climb direct JAGEG then continue climb to 8000 via 197° track to MOVIA and 201° track to LHS VORTAC. Thence via assigned route and altitude.

TAKEOFF RUNWAYS 2, 33, 15, 10, and 28: NA.

LAKE HUGHES TWO DEPARTURE (OBSTACLE) (RNAV)  
(LHS2.LHS) 30SEP04

INYOKERN, CALIFORNIA  
INYOKERN (IYK)

SW-3, 03 OCT 2024 to 31 OCT 2024

SW-3, 03 OCT 2024 to 31 OCT 2024