

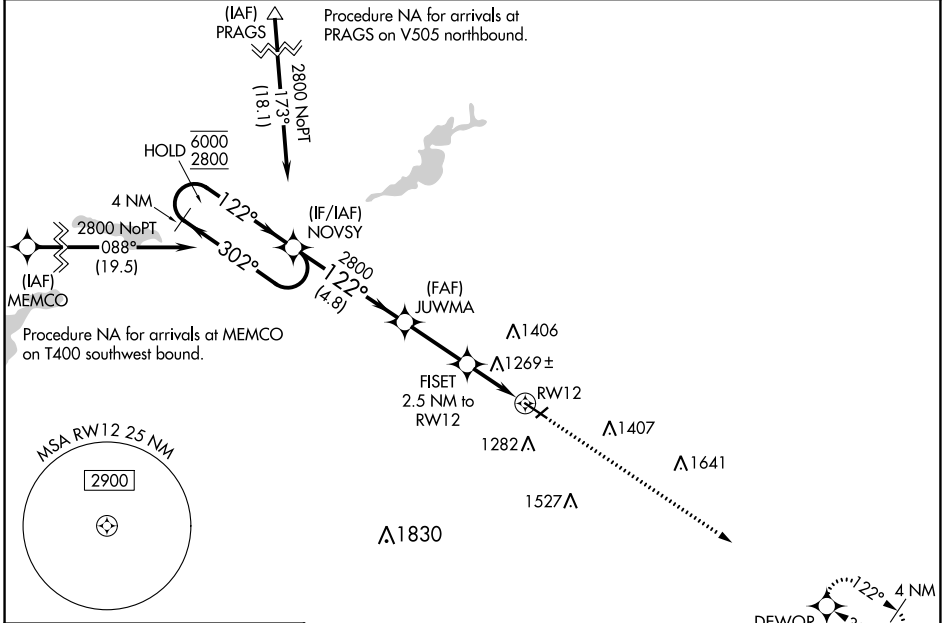
WAAS CH 82627 W12A	APP CRS 122°	Rwy Idg 5500 TDZE 1127 Apt Elev 1145
--	------------------------	---

RNAV (GPS) RWY 12

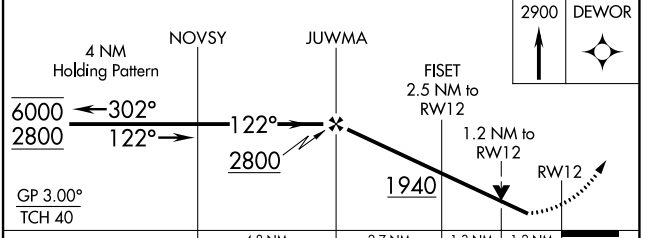
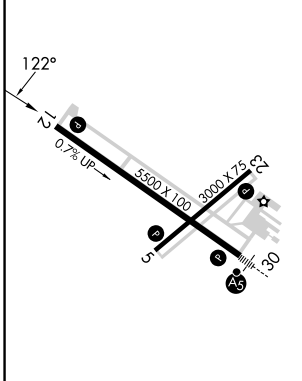
OWATONNA DEGNER RGNL (OWA)

RNP APCH - GPS.		MISSED APPROACH: Climb to 2900 direct DEWOR and hold.
<p>⚠ Rwy 12 helicopter visibility reduction below 3/4 SM NA. For uncompensated Baro-VNAV systems, LNAV/VNAV NA below -17°C or above 54°C.</p>		

AWOS-3 128.325	ROCHESTER APP CON * 119.8 251.125	UNICOM 122.7 (CTAF)
--------------------------	---	-------------------------------



ELEV 1145	TDZE 1127
-----------	-----------



CATEGORY	A	B	C	D
LPV DA	1420-7/8 293 (300-7/8)			
LNAV/VNAV DA	1400-7/8 273 (300-7/8)			
LNAV MDA	1520-1 393 (400-1)	1520-1 1/8 393 (400-1 1/8)		
C CIRCLING	1640-1 495 (500-1)	1700-1 555 (600-1)	1720-1 1/2 575 (600-1 1/2)	1880-2 1/4 735 (800-2 1/4)

MIRL Rwy 5-23
REIL Rwy 5, 12, and 23
HIRL Rwy 12-30

NC-1, 03 OCT 2024 to 31 OCT 2024

NC-1, 03 OCT 2024 to 31 OCT 2024