

APP CRS	Rwy Idg	<b>5012</b>
<b>147°</b>	TDZE	<b>255</b>
	Apt Elev	<b>255</b>

# RNAV (GPS) RWY 15

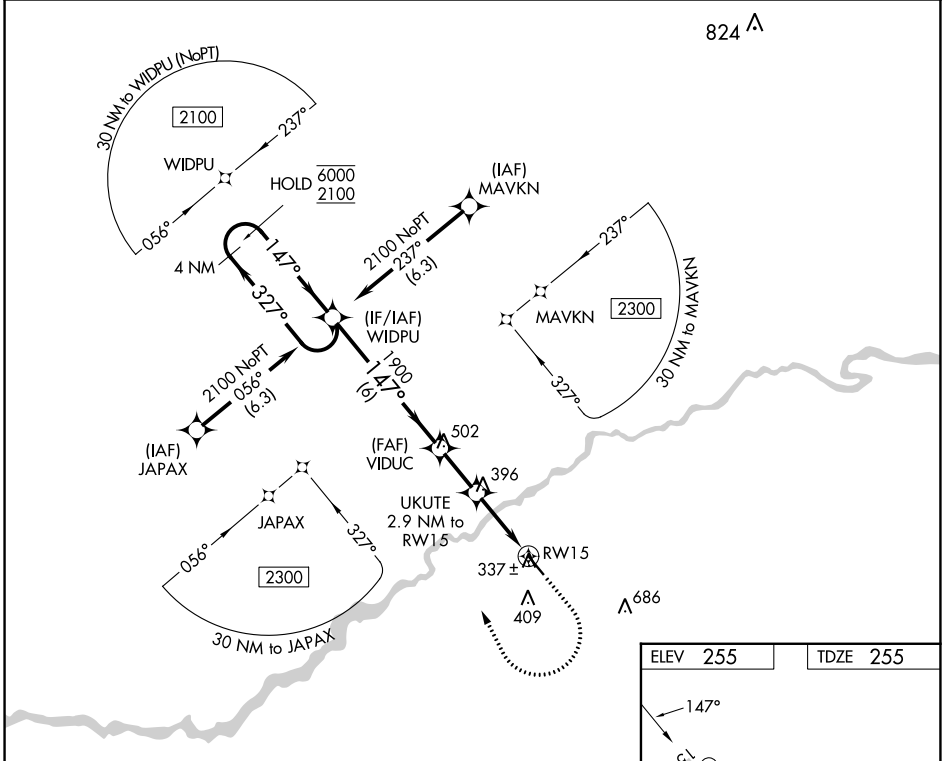
HAZLEHURST (AZE)

RNP APCH - GPS.

**▼** Circling Rwy 33 NA at night. Rwy 15 helicopter visibility reduction below 3/4 SM NA.

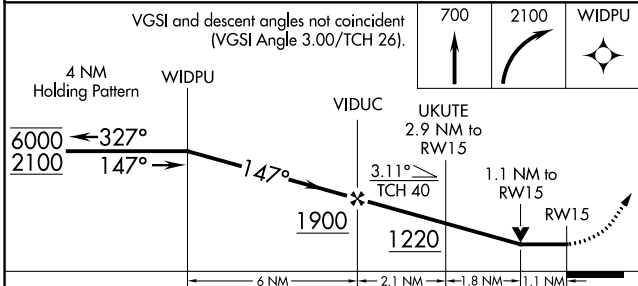
**▲** MISSED APPROACH: Climb to 700, then climbing right turn to 2100 direct WIDPU and hold.

AWOS-3 <b>119.125</b>	JACKSONVILLE CENTER <b>127.575 269.025</b>	UNICOM <b>122.8 (CTAF) 0</b>
--------------------------	---	---------------------------------

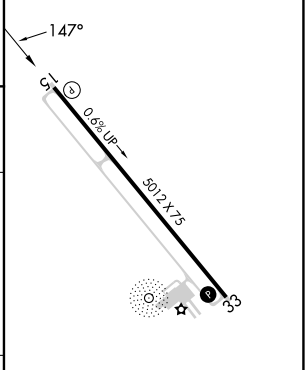


SE-4, 03 OCT 2024 to 31 OCT 2024

SE-4, 03 OCT 2024 to 31 OCT 2024



ELEV 255	TDZE 255
----------	----------



CATEGORY	A	B	C	D
LNAV MDA	600-1 345 (400-1)			
<b>C</b> CIRCLING	720-1 465 (500-1)	820-1 1/2 565 (600-1 1/2)	1000-2 1/2 745 (800-2 1/2)	

REIL Rwy 15 and 33 **0**  
MIRL Rwy 15-33 **0**