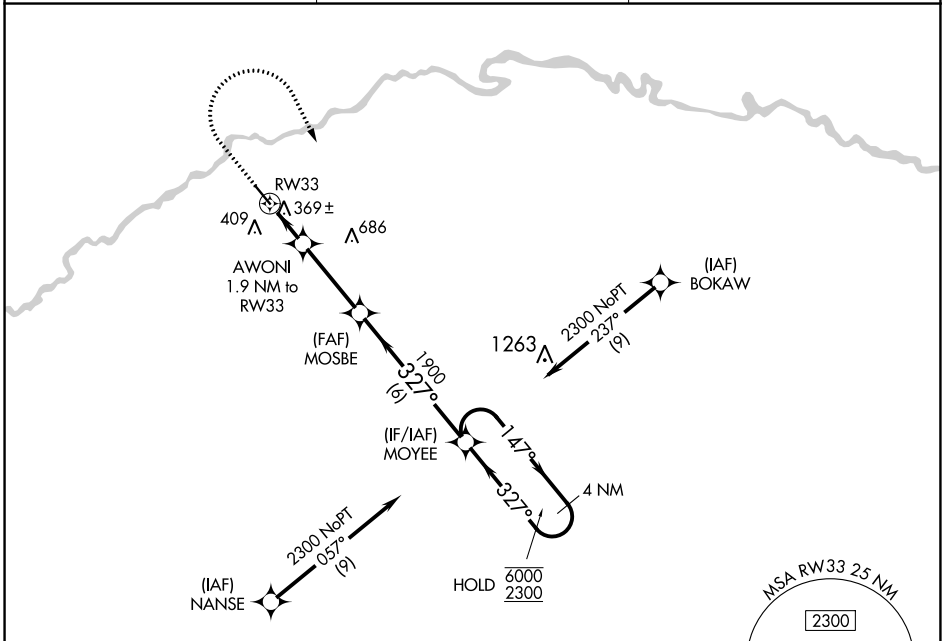


APP CRS	Rwy Idg	5012
327°	TDZE	255
	Apt Elev	255

RNAV (GPS) RWY 33

HAZLEHURST (AZE)

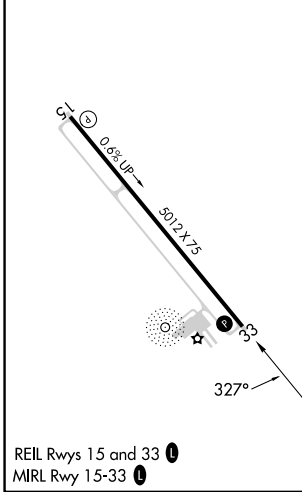
RNP APCH - GPS.		MISSED APPROACH: Climb to 1000, then climbing right turn to 2300 direct MOYEE and hold.
<p>▼ Straight-in Rwy 33 NA at night, Circling Rwy 33 NA at night.</p> <p>▲ Rwy 33 helicopter visibility reduction below 1 SM NA.</p>		
AWOS-3 119.125	JACKSONVILLE CENTER 127.575 269.025	UNICOM 122.8 (CTAF) 0



SE-4, 03 OCT 2024 to 31 OCT 2024

SE-4, 03 OCT 2024 to 31 OCT 2024

ELEV 255	TDZE 255
----------	----------



1000	2300	MOYEE	VGSI and descent angles not coincident (VGSI Angle 3.00/TCH 27).	
↑	↷	✧	MOYEE	4 NM Holding Pattern
<p>AWONI 1.9 NM to RW33</p> <p>3.00 TCH 35</p> <p>880</p> <p>1900</p> <p>1.9 NM</p> <p>3.2 NM</p> <p>6 NM</p>		<p>MOSBE</p> <p>147° → 6000</p> <p>← 327° 2300</p>		
CATEGORY	A	B	C	D
LNAV MDA	620-1		365 (400-1)	
CIRCLING	720-1	465 (500-1)	820-1½ 565 (600-1½)	1000-2¼ 745 (800-2¼)