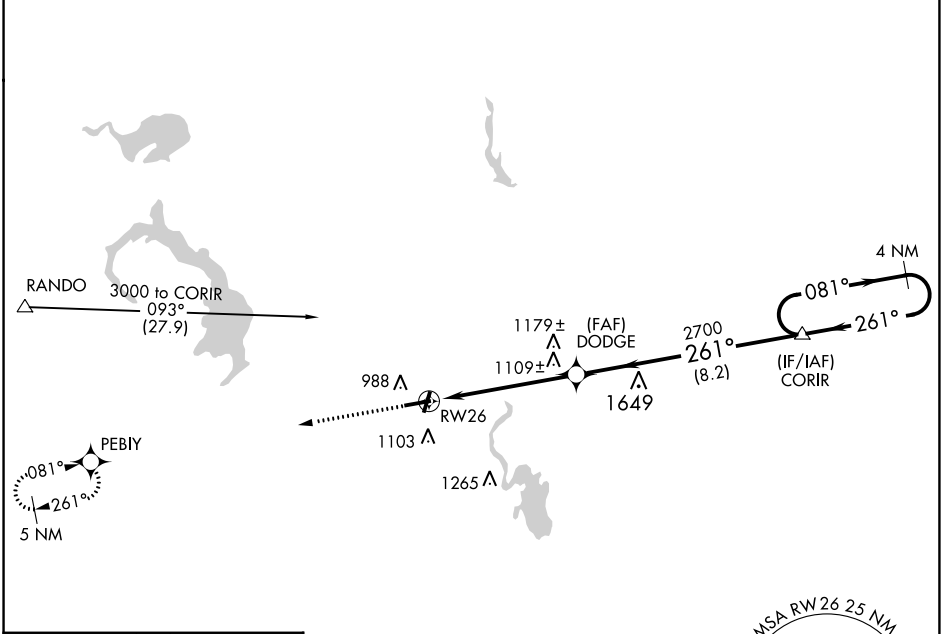


|             |          |             |
|-------------|----------|-------------|
| APP CRS     | Rwy Idg  | <b>5070</b> |
| <b>261°</b> | TDZE     | <b>934</b>  |
|             | Apt Elev | <b>934</b>  |

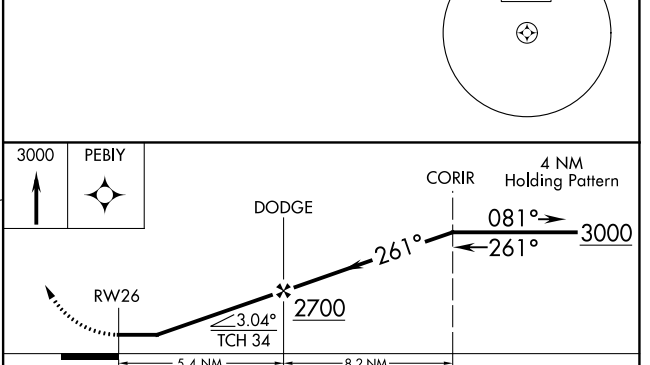
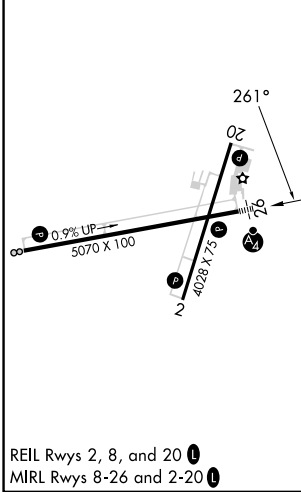
# RNAV (GPS) RWY 26

DODGE COUNTY (UNU)

|   |  |  |
|---|--|--|
| <p>⚠ When local altimeter setting not received, use Dane County Rgnl-Truax Fld altimeter setting and increase all MDAs 100 feet, and increase Circling Cat C visibility ¼ SM. DME/DME RNP-0.3 NA. Visibility reduction by helicopters NA. Inoperative table does not apply.</p> | <p>MALSF</p>                                     | <p>MISSED APPROACH: Climb to 3000 direct PEBIY and hold.</p> |
| <p>AWOS-3<br/><b>120.825</b></p>  | <p>MADISON APP CON *<br/><b>119.15 343.7</b></p> | <p>UNICOM<br/><b>122.7 (CTAF)</b></p>                        |



|          |          |
|----------|----------|
| ELEV 934 | TDZE 934 |
|----------|----------|



| CATEGORY          | A      | B           | C                       | D  |
|-------------------|--------|-------------|-------------------------|----|
| LNAV MDA          | 1360-1 | 426 (500-1) | 1360-1¼<br>426 (500-1¼) | NA |
| <b>C</b> CIRCLING | 1440-1 | 506 (600-1) | 1440-1½<br>506 (600-1½) | NA |

EC-3, 03 OCT 2024 to 31 OCT 2024

EC-3, 03 OCT 2024 to 31 OCT 2024