

| | | |
|-------------|----------|-------------|
| APP CRS | Rwy Idg | 4300 |
| 103° | TDZE | 706 |
| | Apt Elev | 706 |

RNAV (GPS) RWY 11

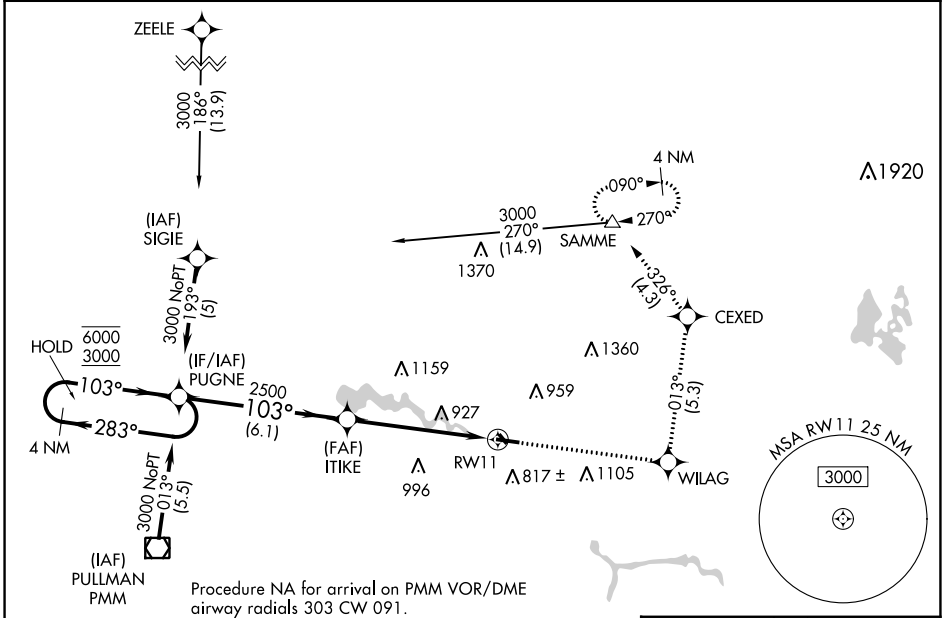
PADGHAM FLD (35D)

RNP APCH - GPS.

NA Circling NA to Rwy 15 and 33. Rwy 11 helicopter visibility reduction below ¼ SM NA. Use Holland altimeter setting, when not received use Grand Rapids altimeter setting and increase all MDAs 40 feet and LNAV Cat C visibility ¼ SM.

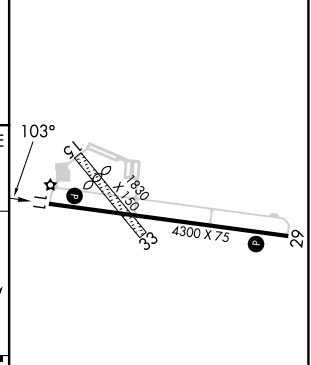
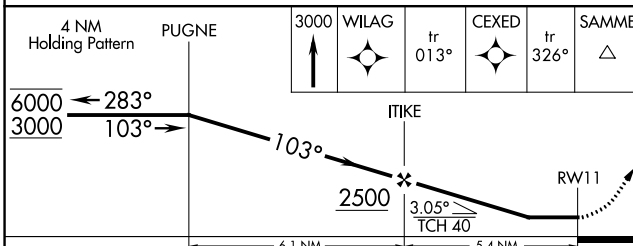
MISSED APPROACH: Climb to 3000 direct WILAG and on track 013° to CEXED and track 326° to SAMME and hold, continue climb-in-hold to 3000.

| | | |
|----------------------------|---|---------------------------------|
| BIV ASOS 119.025 | GREAT LAKES APP CON * 128.4 257.6 | UNICOM 122.8 (CTAF) 0 |
|----------------------------|---|---------------------------------|



Procedure NA for arrival on PMM VOR/DME airway radials 303 CW 091.

| | |
|----------|----------|
| ELEV 706 | TDZE 706 |
|----------|----------|



| CATEGORY | A | B | C | D |
|-------------------|-----------------------|-----------------------|-------------------------------|----|
| LNAV MDA | 1220-1 | 514 (600-1) | 1220-1 1/8 514 (600-1 1/8) | NA |
| C CIRCLING | 1280-1 574 (600-1) | 1320-1 614 (700-1) | 1460-2 1/4 754 (800-2 1/4) | NA |

REIL Rwy 11 and 29 **0**
MIRL Rwy 11-29 **0**

EC-1, 03 OCT 2024 to 31 OCT 2024

EC-1, 03 OCT 2024 to 31 OCT 2024