

APP CRS <b>283°</b>	Rwy Idg <b>4300</b>
	TDZE <b>705</b>
	Apt Elev <b>706</b>

# RNAV (GPS) RWY 29

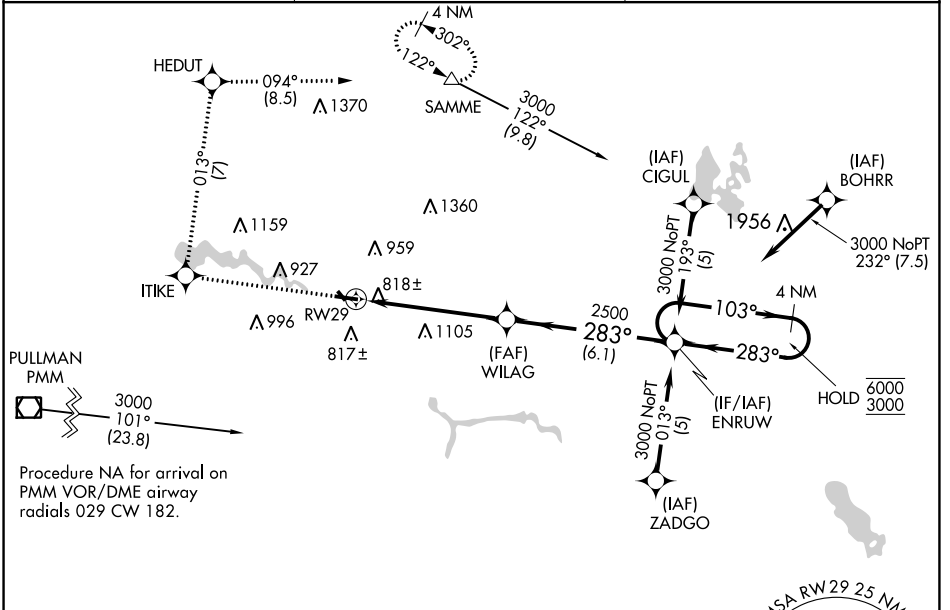
PADGHAM FLD (35D)

RNP APCH - GPS.

**⚠ NA** Circling NA to Rws 15 and 33. Rwy 29 helicopter visibility reduction below  $\frac{3}{8}$  SM NA. Use Holland altimeter setting; when not received, use Grand Rapids altimeter setting and increase all MDAs 40 feet and LNAV Cat C visibility  $\frac{1}{8}$  SM.

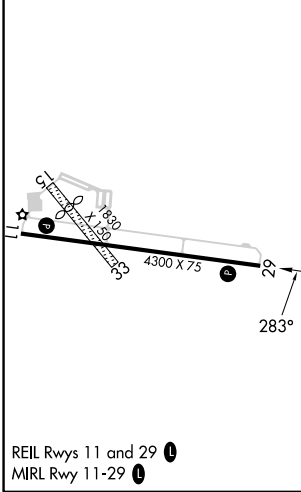
MISSED APPROACH: Climb to 3000 direct ITIKE and on track 013° to HEDUT and track 094° to SAMME and hold.

BIV ASOS <b>119.025</b>	GREAT LAKES APP CON ★ <b>128.4 257.6</b>	UNICOM <b>122.8 (CTAF) 0</b>
----------------------------	---	---------------------------------



Procedure NA for arrival on PMM VOR/DME airway radials 029 CW 182.

ELEV 706	TDZE 705
----------	----------



3000	ITIKE	HEDUT	SAMME	ENRUW	4 NM Holding Pattern
↑	tr 013°	tr 094°	△		
RWY 29		WILAG		103° → 6000	← 283° 3000
5.4 NM		6.1 NM			
CATEGORY	A	B	C	D	
LNAV MDA	1380-1	675 (700-1)	1380-1 $\frac{7}{8}$ 675 (700-1 $\frac{7}{8}$ )	NA	
<b>C</b> CIRCLING	1380-1	674 (700-1)	1460-2 $\frac{1}{4}$ 754 (800-2 $\frac{1}{4}$ )	NA	

EC-1, 03 OCT 2024 to 31 OCT 2024

EC-1, 03 OCT 2024 to 31 OCT 2024