

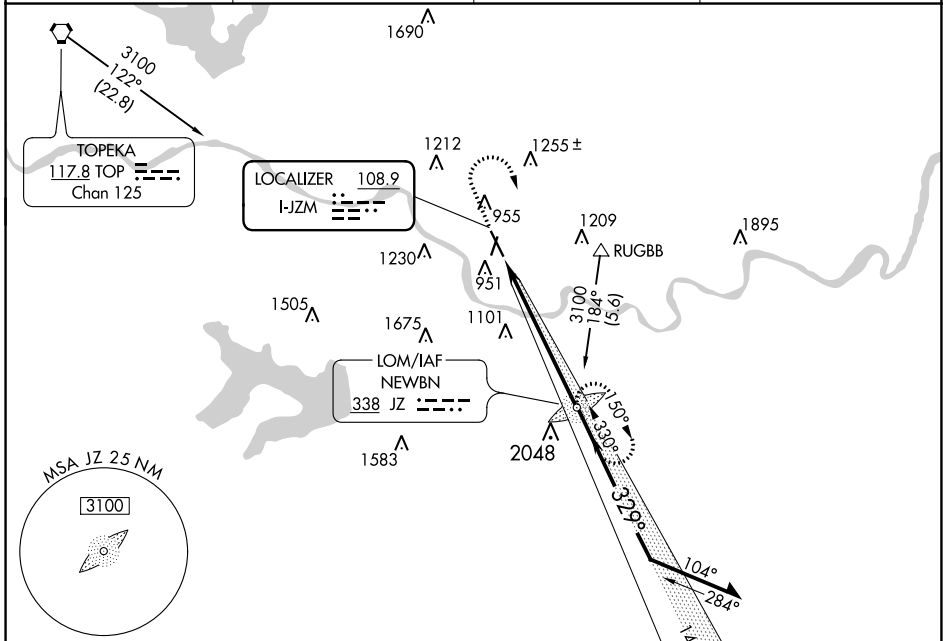
LOC I-JZM <b>108.9</b>	APP CRS <b>329°</b>	Rwy Idg <b>5700</b> TDZE <b>831</b> Apt Elev <b>833</b>
---------------------------	------------------------	---

# ILS or LOC RWY 33

LAWRENCE RGNL (LWC)

<p><b>⚠</b> When local altimeter setting not received, use Philip Billard Muni altimeter setting and increase DA to 1083 feet; increase all MDAs 60 feet and visibility Cat C ¼ SM.</p>	<p>MALSR </p>	<p><b>MISSED APPROACH:</b> Climb to 2000 then climbing right turn to 3100 direct NEWBN LOM and hold.</p>
---	---------------	--

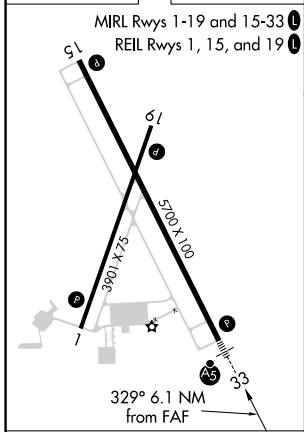
ASOS <b>121.225</b>	KANSAS CITY CENTER <b>123.8 343.7</b>	CLNC DEL <b>121.825</b>	UNICOM <b>123.0 (CTAF) 0</b>
------------------------	--	----------------------------	---------------------------------



NC-2, 03 OCT 2024 to 31 OCT 2024

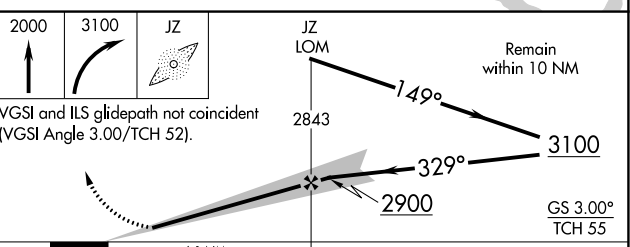
NC-2, 03 OCT 2024 to 31 OCT 2024

ELEV <b>833</b>	TDZE <b>831</b>
-----------------	-----------------



FAF to MAP 6.1 NM					
Knots	60	90	120	150	180
Min:Sec	6:06	4:04	3:03	2:26	2:02

## ADF REQUIRED



CATEGORY	A	B	C	D
S-ILS 33	1031-½ 200 (200-½)			NA
S-LOC 33	1260-½	429 (500-½)	1260-¾ 429 (500-¾)	NA
CIRCLING	1420-1 587 (600-1)	1480-1 647 (700-1)	1620-2¼ 787 (800-2¼)	NA