

WAAS CH 57913 W33A	APP CRS 330°	Rwy Idg TDZE Apt Elev	5700 831 833
--	------------------------	-----------------------------	---

RNAV (GPS) RWY 33

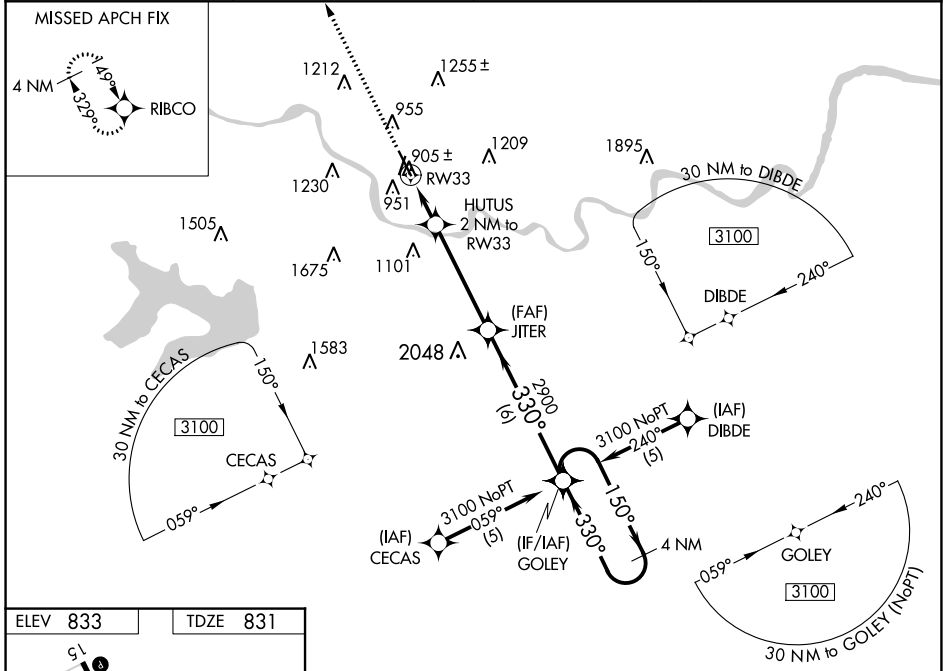
LAWRENCE RGNL (LWC)

⚠ For uncompensated Baro-VNAV systems, LNAV/VNAV NA below -16°C (4°F) or above 54°C (130°F). DME/DME RNP-0.3 NA. When local altimeter setting not received, use Philip Billard Muni altimeter setting and increase LPV DA to 1083 feet, increase LNAV/VNAV DA to 1252 feet and all visibilities ¼ SM; increase all MDAs 60 feet and visibility Cat C ¼ SM. Baro-VNAV and VDP NA when using Philip Billard Muni altimeter setting.



MISSED APPROACH:
Climb to 2700 direct RIBCO and hold.

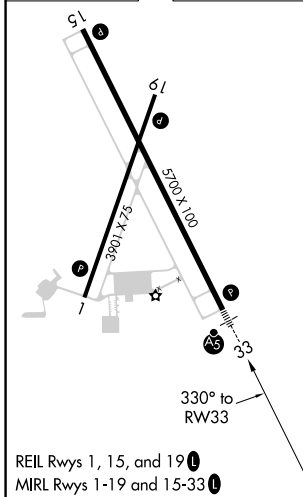
ASOS 121.225	KANSAS CITY CENTER 123.8 343.7	CLNC DEL 121.825	UNICOM 123.0 (CTAF) 1
------------------------	--	----------------------------	---------------------------------



NC-2, 03 OCT 2024 to 31 OCT 2024

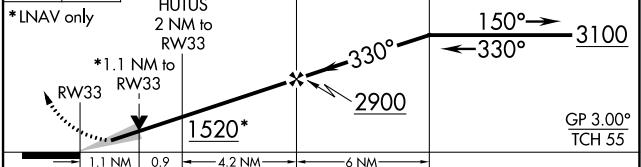
NC-2, 03 OCT 2024 to 31 OCT 2024

ELEV 833	TDZE 831
-----------------	-----------------



2700 RIBCO VGSI and RNAV glidepath not coincident (VGSI Angle 3.00/TCH 52).

4 NM Holding Pattern



CATEGORY	A	B	C	D
LPV DA	1031-½	200 (200-½)		NA
LNAV/VNAV DA	1200-¾	369 (400-¾)		NA
LNAV MDA	1220-½	389 (400-½)		NA
CIRCLING	1420-1 587 (600-1)	1480-1 647 (700-1)	1620-2¼ 787 (800-2¼)	NA