

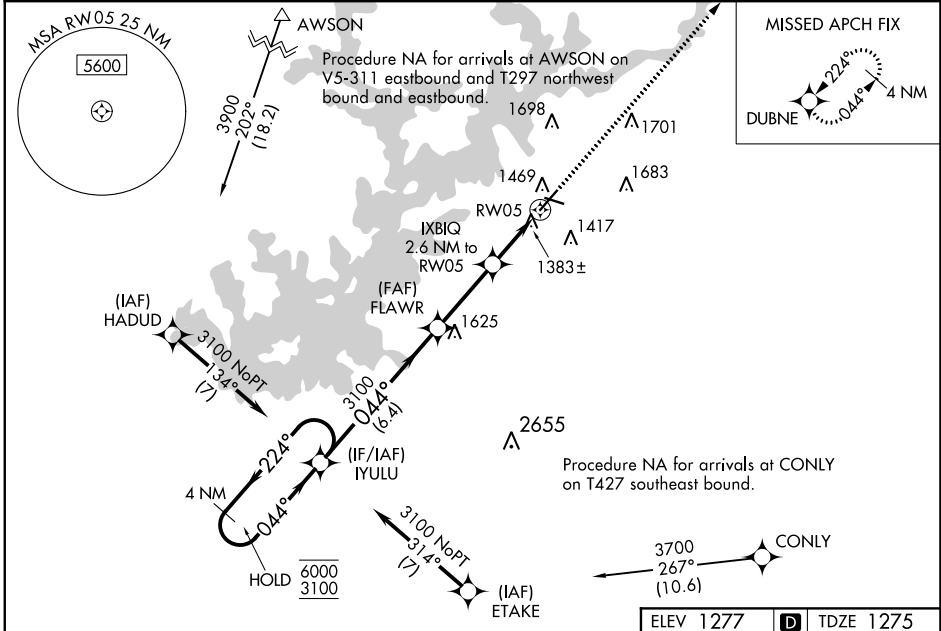
WAAS CH <b>42605</b> <b>W05A</b>	APP CRS <b>044°</b>	Rwy Idg <b>5370</b> TDZE <b>1275</b> Apt Elev <b>1277</b>
--	------------------------	---

# RNAV (GPS) RWY 5

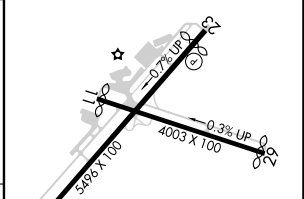
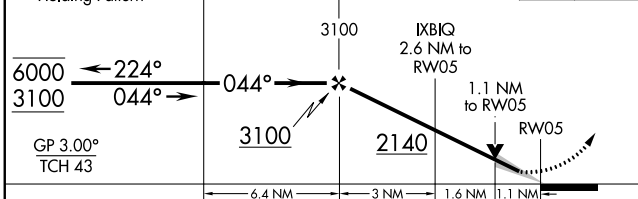
LEE GILMER MEML (GVL)

RNP APCH - GPS.	MALSRL 	MISSED APPROACH: Climb to 3500 direct DUBNE and hold.
 Circling to Rwy 11, 29 NA at night. For uncompensated Baro-VNAV systems, LNAV/VNAV NA below -6°C or above 54°C. For inop ALS, increase LNAV/VNAV all Cats visibility to ½ SM, increase LNAV Cats C and D visibility to 1 SM.		

ASOS <b>126.475</b>	ATLANTA APP CON* <b>132.475 291.1</b>	UNICOM <b>123.075 (CTAF)</b>
------------------------	--	---------------------------------



ELEV 1277		TDZE 1275
-----------	--	-----------



CATEGORY	A	B	C	D
LPV DA		1475-½	200 (200-½)	
LNAV/VNAV DA		1551-½	276 (300-½)	
LNAV MDA	1640-½	365 (400-½)	1640-5/8	365 (400-5/8)
CIRCLING	1780-1 503 (600-1)	2000-1 723 (800-1)	2000-2 723 (800-2)	2020-2½ 743 (800-2½)



SE-4, 03 OCT 2024 to 31 OCT 2024

SE-4, 03 OCT 2024 to 31 OCT 2024