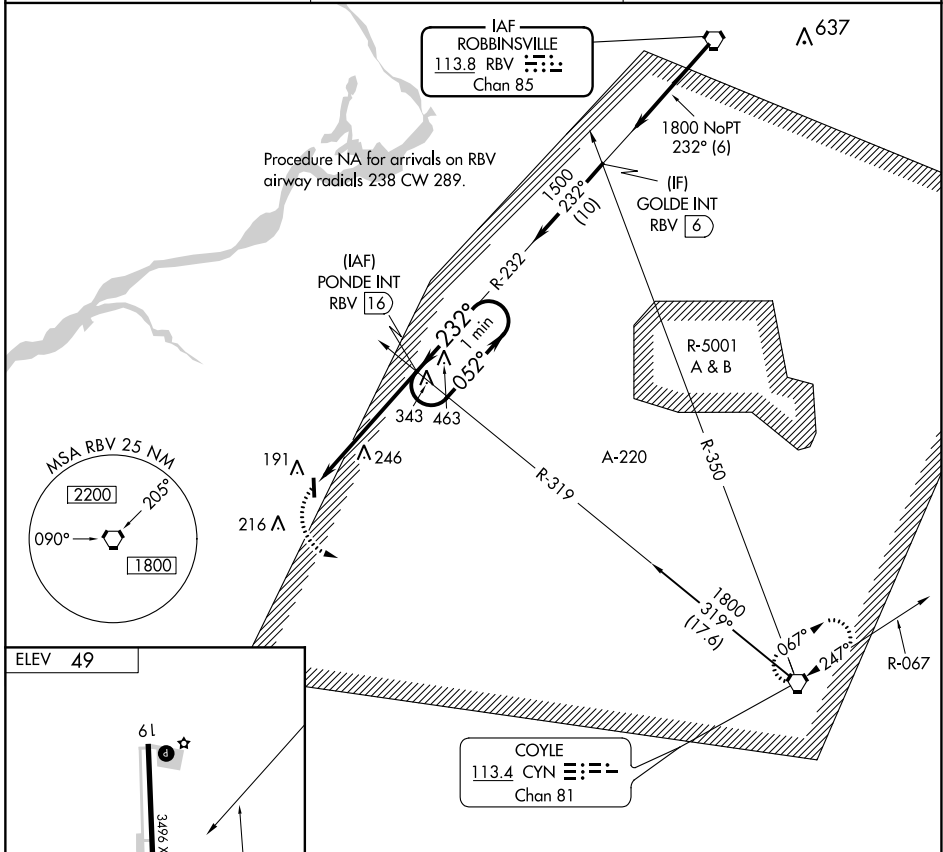


VORTAC RBV 113.8 Chan 85	APP CRS 232°	Rwy Idg TDZE Apt Elev 49	N/A N/A N/A
---------------------------------------	------------------------	--	-------------------

VOR-A
FLYING W (N14)

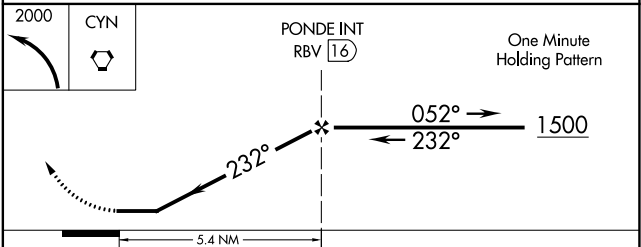
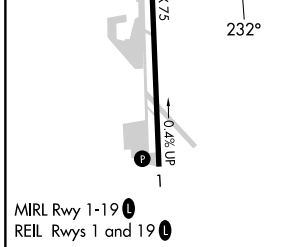
▼ Helicopter visibility reduction below 1 SM NA. Use Mount Holly altimeter setting, when not received use Northeast Philadelphia altimeter setting and increase all MDA 40 feet. Night Landing: Rwy 1 NA.
 ▲ NA MISSED APPROACH: Climbing left turn to 2000 direct CYN VORTAC and hold.

VAY ASOS 119.325	MC GUIRE APP CON 126.475 363.8	UNICOM 122.8 (CTAF) 0
----------------------------	--	--



NE-2, 03 OCT 2024 to 31 OCT 2024

NE-2, 03 OCT 2024 to 31 OCT 2024



FAF to MAP 5.4 NM						
Knots	60	90	120	150	180	
Min:Sec	5:24	3:36	2:42	2:10	1:48	
CATEGORY	A		B		C	D
CIRCLING	600-1 551 (600-1)		600-1½ 551 (600-1½)		NA	