

| | | | |
|--|------------------------|---|-------------|
| WAAS CH 65607 W16A | APP CRS 159° | Rwy Idg TDZE 789 Apt Elev 789 | 5100 |
|--|------------------------|---|-------------|

RNAV (GPS) RWY 16

CARROLL COUNTY RGNL/JACK B POAGE FLD (DMW)

▼ Baro-VNAV NA when using Frederick altimeter setting. For uncompensated Baro-VNAV systems, LNAV/VNAV NA below -16°C (4°F) or above 54°C (130°F). When local altimeter setting not received, use Frederick altimeter setting and increase LPV DA to 1199 feet, LNAV/VNAV DA to 1307 feet, and all MDAs 120 feet; increase LPV all Cats visibility 1/8 SM, LNAV Cat C visibility 3/8 SM, and Circling Cat C visibility 1/2 SM. When VGSi inop, Straight-in/Circling Rwy 16 procedure NA at night. DME/DME RNP-0.3 NA. Visibility reduction by helicopters NA.

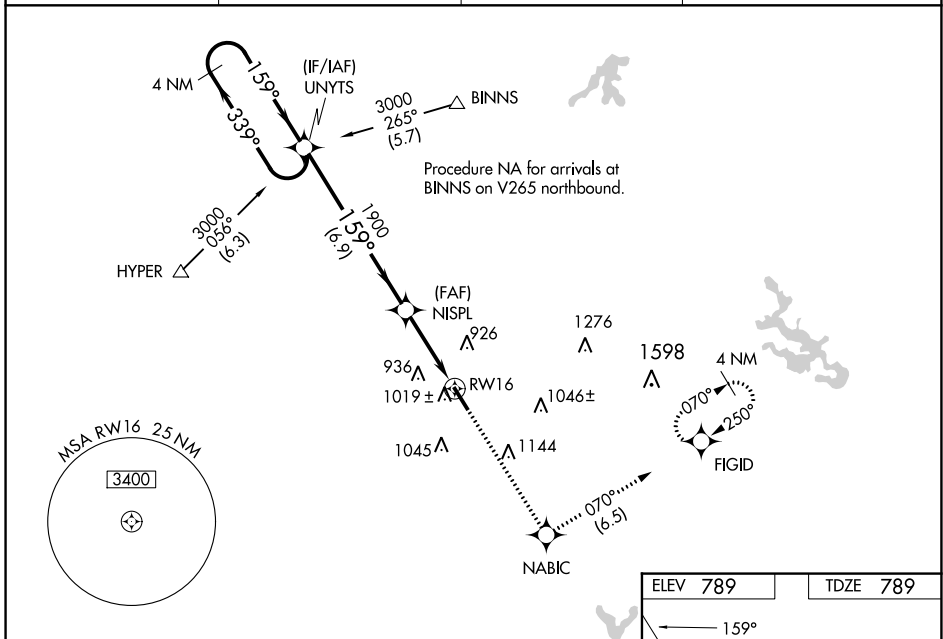
MISSED APPROACH:
Climb to 2200 direct NABIC then climbing left turn to 3000 on track 070° to FIGID and hold.

AWOS-3
121.25

POTOMAC APP CON
125.525 291.625

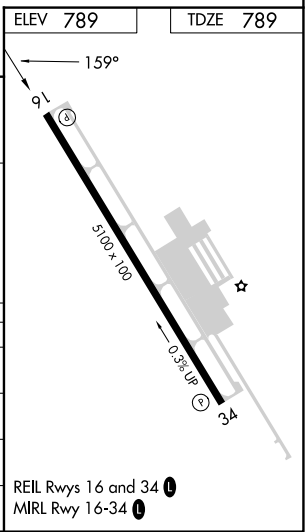
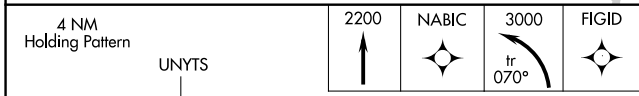
GCO
121.725

UNICOM
122.7 (CTAF) 0



NE-3, 03 OCT 2024 to 31 OCT 2024

NE-3, 03 OCT 2024 to 31 OCT 2024



| CATEGORY | A | B | C | D |
|---------------|----------------------------|-----------------------|-------------------------------|----|
| LPV DA | 1081-1 292 (300-1) | | | NA |
| LNAV/ VNAV DA | 1189-1 3/8 400 (400-1 3/8) | | | NA |
| LNAV MDA | 1280-1 | 491 (500-1) | 1280-1 3/8 491 (500-1 3/8) | NA |
| CIRCLING | 1320-1 531 (600-1) | 1400-1 611 (700-1) | 1500-2 711 (800-2) | NA |

REIL Rwy 16 and 34 **0**
MIRL Rwy 16-34 **0**